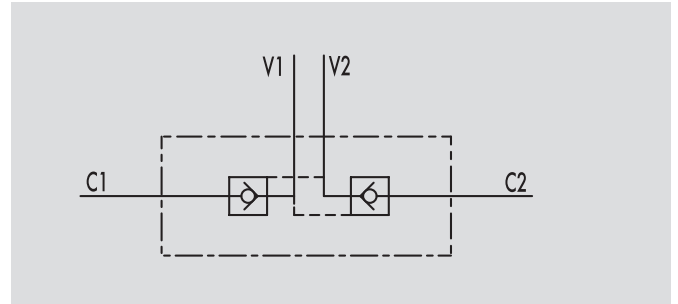
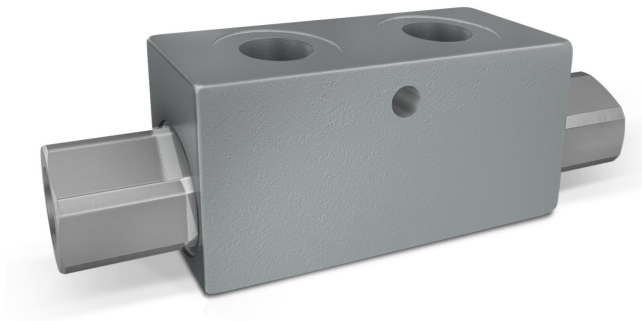


# Double Pilot Operated Check Valve



## DOUBLE PILOT OPERATED CHECK VALVES

### USE AND OPERATION:

Pilot check valves are used to block the cylinder in both directions. Flow is free in one direction and blocked in the reverse direction until pilot pressure is applied.

### MATERIALS AND FEATURES:

Body: zinc-plated steel.  
 Internal parts: hardened and ground steel.  
 Seals: BUNA N standard  
 Poppet type: any leakage.

### APPLICATIONS:

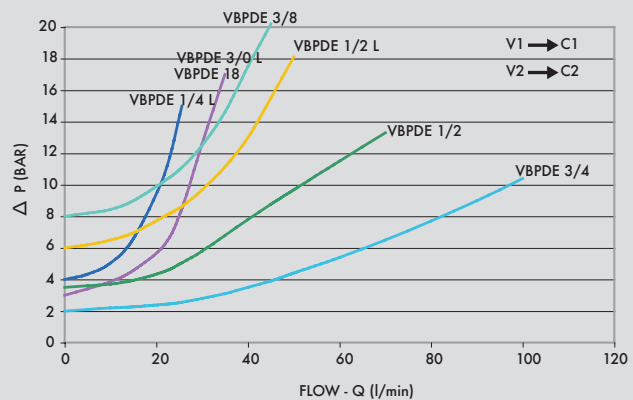
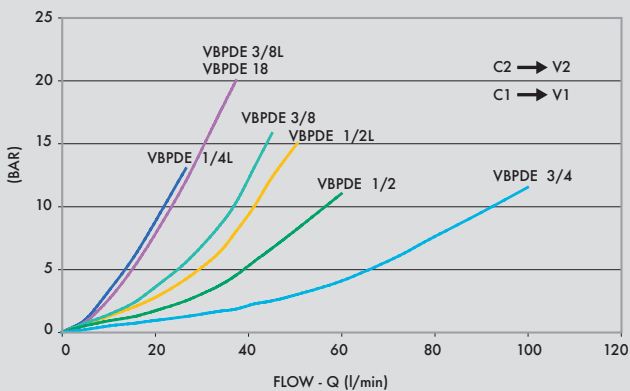
Connect V1 and V2 to the pressure flow and C1 and C2 to the actuator.

### ON REQUEST

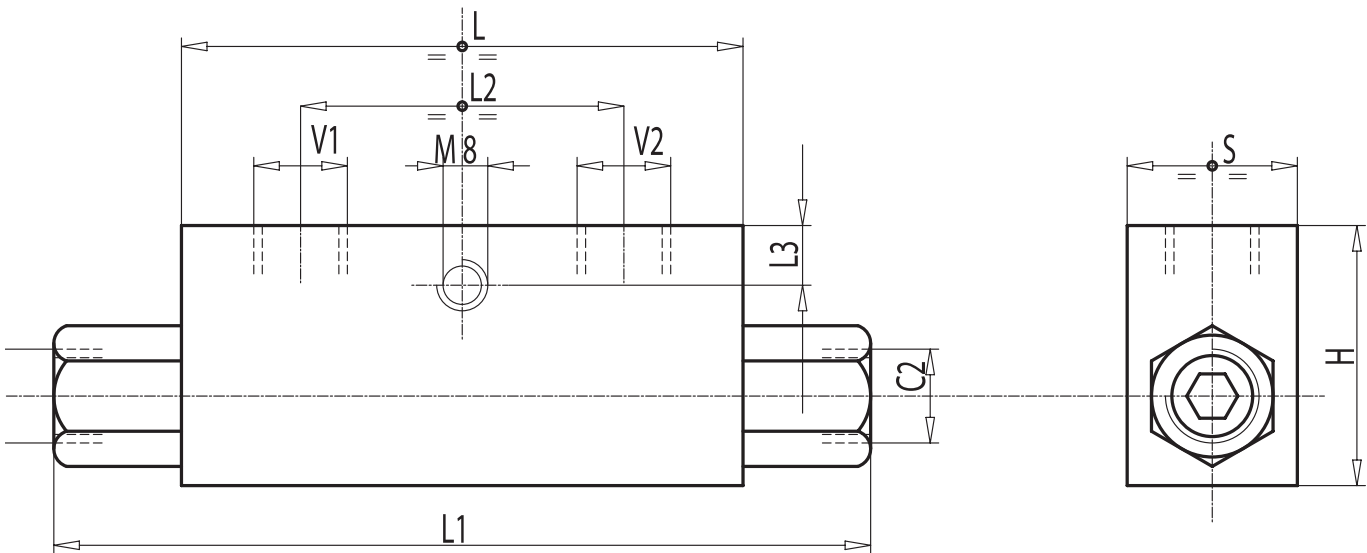
- without seal on pilot piston
- 1 Bar spring
- 8 Bar spring

PRESSURE DROPS CURVE

Oil temperature: 50° C - Oil viscosity: 30 cSt



CODE	TYPE	PILOT RATIO	MAX FLOW Lt. / min	MAX PRESSURE Bar	CRACKING PRESSURE Bar
<b>V0010</b>	VBPDE 1/4" L	1:5,5	20	350	4
<b>V0020</b>	VBPDE 3/8" L	1:5,5	35	350	3
<b>V0030</b>	VBPDE 1/2" L	1:5	50	350	6



CODE	TYPE	GAS - MET	mm						WEIGHT
			mm	mm	mm	mm	mm	mm	kg
<b>V0010</b>	VBPDE 1/4"L	G 1/4"	64	113	36	8	40	30	0,636
<b>V0020</b>	VBPDE 3/8"L	G 3/8"	80	128	38	8	40	30	0,736
<b>V0030</b>	VBPDE 1/2" L	G 1/2"	90	142	45	12,5	45	35	1,042