

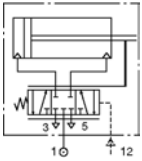
Actuators

In-line positioner cylinders

M/1525, M/1540

Double acting

Ø 2½" & 4"



Position directly proportional to input signal

High speeds with good repeatability

Vibration resistant – can be used in adverse conditions

Fail instroke on signal failure

Technical data

Medium:

Compressed air, filtered, non-lubricated.

Response time:

10 secs max. for 200 mm stroke

Steady state air consumption:

Less than 0,35 dm³/sec.

Installation:

Air supply must incorporate a pre-filter and a high efficiency 5 µm filter

Operating pressure:

2 to 10 bar pneumatic models

Control pressure:

0,2 to 1,0 bar

Operating temperature:

-20°C to +80°C

Consult our Technical Service for use below +2°C

Sensitivity:

Within 0,007 bar

Repeatability:

Within 0,075% full stroke

Materials

Piston rod & valve spool: stainless steel

Piston rod end & zero adjuster: zinc plated steel

Valve bush: brass

Cylinder barrel, piston & valve body: aluminium alloy

Standard models

Ø	Useful force at 7 bar	Port size	Model
2½"	1222 N	G1/4	M/1525/*
4"	3118 N	G1/4	M/1540/*

* Insert stroke length in mm.

Standard strokes

Ø	75	125	160	200	250	320
2½"	○	○	○	○	○	○
4"	○	○	○	○	○	○

Other stroke lengths for all models are available in 50 mm increments up to a maximum of 320 mm.

Options selector

M/15***/**

Cylinder diameters (inch)	Substitute	Strokes (mm)
2½	25	320 max
4	40	

In-line positioner cylinders

M/1525, M/1540

Double acting

Ø 2½ & 4

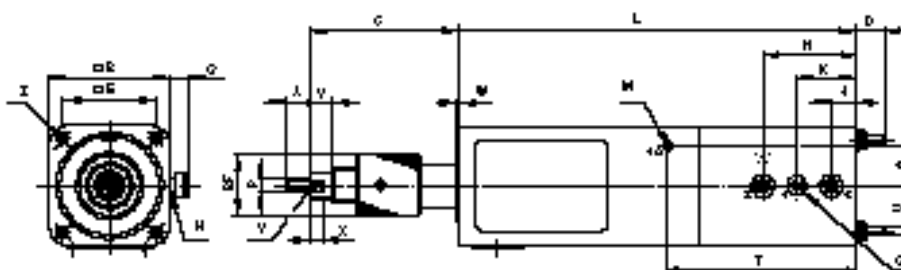
Mountings

Ø	B	BG	C	D	G	L	R	UF	UR
2½	QM/1063	QM/1065	QM/1066	QM/1067	QM/1064	QM/1069	QM/1086	QM/1073	QM/1074
4	QM/1075	QM/1077	QM/1078	QM/1079	QM/1076	QM/1084	QM/1087	QM/1073	QM/1085

Please see next page for details of mountings.

Standard cylinders

M/1525, M/1540



Ø	Stroke	A	B	C	D	E	F	G	H	J	K	L	M	N	P
2½"	75	15	76,8	93	17,5	55,9	38	11	G1/8 x 13 deep	16,5	38	288	G1/8	59	M10 x 1,5
2½"	125	15	76,8	93	17,5	55,9	38	11	G1/8 x 13 deep	16,5	38	338	G1/8	59	M10 x 1,5
2½"	200	15	76,8	93	17,5	55,9	38	11	G1/8 x 13 deep	16,5	38	413	G1/8	59	M10 x 1,5
4"	75	15	115	84,4	30,5	89	38	15	G1/4 x 20 deep	16,5	37,6	298,5	G1/8	59	M10 x 1,5
4"	125	15	115	84,4	30,5	89	38	15	G1/4 x 20 deep	16,5	37,6	348,5	G1/8	59	M10 x 1,5
4"	200	15	115	84,4	30,5	89	38	15	G1/4 x 20 deep	16,5	37,6	423,5	G1/8	59	M10 x 1,5
Ø	Q	R	S	U	V	W max.	X	Y A/F	Z	AA	BB	CC	EE	DD	kg
2½"	G1/4	38,4	23	M6 x 1	15	0,36	8	17	M6 x 1 x 22 deep	13	136,3	18,5	80	163	4,5
2½"	G1/4	38,4	23	M6 x 1	15	0,36	8	17	M6 x 1 x 22 deep	13	136,3	18,5	80	163	5,1
2½"	G1/4	38,4	23	M6 x 1	15	0,36	8	17	M6 x 1 x 22 deep	13	136,3	18,5	80	163	5,8
4"	G1/4	57,5	34	M8 x 1,25	15	1,1	8	17	M8 x 1,25 x 22 deep	13	174,5	18,6	80	163	9,2
4"	G1/4	57,5	34	M8 x 1,25	15	1,1	8	17	M8 x 1,25 x 22 deep	13	174,5	18,6	80	163	10,2
4"	G1/4	57,5	34	M8 x 1,25	15	1,1	8	17	M8 x 1,25 x 22 deep	13	174,5	18,6	80	163	11,3

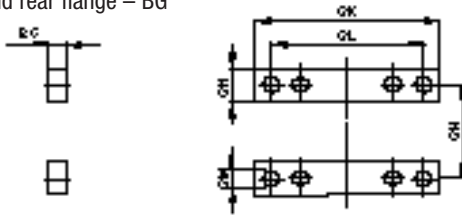
For piped exhaust discard exhaust filters fitted to threads 'H'.

In-line positioner cylinder mountings

For M/1525, M/1540

Mountings

Rear flange – B
Front flange – G
Front and rear flange – BG



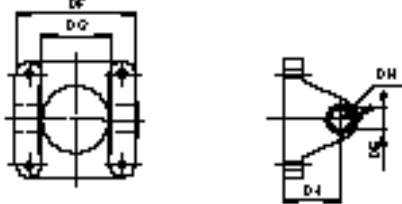
Ø	BC	GH	GK	GL	Ø GM	GN	kg
2½	10	56	113	93,5	8,7	20	0,25
4	16	89	178	146	13,5	32	1,0

Foot – C



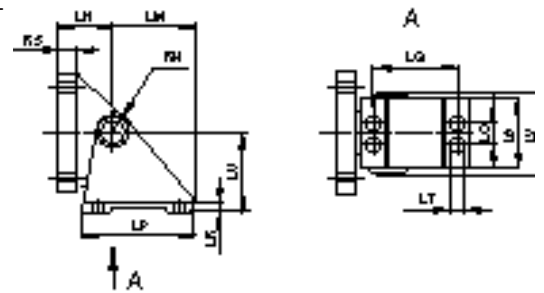
Ø	Ø CE	CF	CG	kg
2½	8,7	47	55,6	0,25
4	13,5	70	50,8	0,50

Rear clevis – D



Ø	DE	DF	DG	DH	DJ	kg
2½	16	74	42,9	13	28,5	0,25
4	22	117,5	69,8	19	57	1,25

Rear hinge – L



Ø	LM	LN	LP	LQ	LR	LO	LS	Ø LT	LU	LV	RH	RS	kg
2½	51	35	67	47,5	8	19	68,5	8,3	47,5	73	14,5	9,5	1,25
4	78	51	102	76	9,5	22	70	11,9	74,5	82,5	21	21	3,5

Rear eye – R



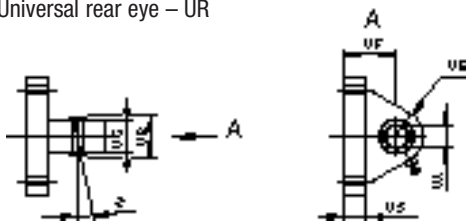
Ø	LN	RH	RS	RT	RY	kg
2½	35	14,5	9,5	38,1	16	0,80
4	51	21	21	44,5	18	2,60

Universal piston rod eye – UF



Ø	UG	UH	UJ	UK	UL (A/F)	UN	Z	kg
2½	14	10,5	10	15	17	15	10°	0,07
4	14	10,5	10	15	17	15	10°	0,07

Universal rear eye – UR



Ø	UA	UB	UC	UE	UF	US	Z	kg
2½	14	19	15	26	35	9	10°	0,6
4	14	19	15	26	50,8	21	10°	2,4