

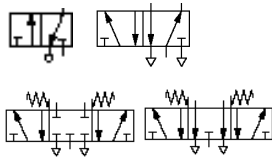
Valves

Super X

Manually & mechanically actuated spool valve

In-line

3/2, 5/2 & 5/3, G1/8, G1/4



- Wide range of operators
- Suitable for multi-directional flow and dual supply applications
- High flow capacity
- Lightweight corrosion resistant materials

*Applies to emergency stop valves only

Technical data

Medium:

Compressed air, filtered, lubricated and non-lubricated

Operating pressure:

Maximum 10 bar.

Flow:

Size l/min

G1/8 335

G1/4 965

Ambient temperature:

0°C to +70°C.

Consult our Technical Service for use below +2°C.

Materials

Body: die-cast aluminium alloy

End cover: aluminium or glass-filled nylon

Seals: nitrile rubber

Alternative models

Solenoid and pilot operated version

– see V60-63 Series, page 282

Mechanical

Port size	Function	Actuation	kg	Model	Service kit	Drawing no.
G1/8	3/2	Plunger /Spring	0,14	03 0400 02	03 8408 02	A, 1
G1/8	3/2	Plunger /Pilot	0,20	03 0417 02	03 8408 02	C, 1
G1/8	3/2	Roller /Spring	0,14	03 0402 02	03 8408 02	A, 2
G1/8	3/2	Roller lever /Spring	0,21	03 0411 02	03 8408 02	A, 4
G1/8	3/2	Roller lever (heavy duty) /Spring	0,21	03 0293 02	03 8408 02	A, 10
G1/8	3/2	Sensitive roller lever /Spring	0,25	03 0423 02	–	A, 5
G1/8	3/2	Roller /Pilot	0,18	03 0409 02	03 8408 02	C, 2
G1/8	3/2	Roller lever /Pilot	0,25	03 0427 02	03 8408 02	C, 4
G1/8	3/2	One-way trip /Spring	0,21	03 0410 02	03 8408 02	A, 7
G1/8	3/2	One-way trip (heavy duty) /Spring	0,21	03 0294 02	03 8408 02	A, 11
G1/8	3/2	Antenna /Spring	0,21	03 0432 02	–	A, 8
G1/8	5/2	Plunger /Spring	0,25	X3 0440 02	03 8408 02	E, 1
G1/8	5/2	Plunger /Pilot	0,31	X3 0457 02	03 8408 02	G, 1
G1/8	5/2	Roller /Spring	0,25	X3 0442 02	03 8408 02	E, 2
G1/8	5/2	Roller lever /Spring	0,32	X3 0451 02	03 8408 02	E, 4
G1/8	5/2	Roller lever (heavy duty) /Spring	0,29	X3 0393 02	03 8408 02	E, 10
G1/8	5/2	Sensitive roller lever /Spring	0,36	X3 0463 02	–	E, 5
G1/8	5/2	Roller /Pilot	0,29	X3 0449 02	03 8408 02	G, 2
G1/8	5/2	Roller lever /Pilot	0,36	X3 0467 02	03 8408 02	G, 4
G1/8	5/2	One-way trip /Spring	0,32	X3 0450 02	03 8408 02	E, 7
G1/8	5/2	One-way trip (heavy duty) /Spring	0,29	X3 0394 02	03 8408 02	E, 11
G1/8	5/2	Antenna /Spring	0,30	X3 0472 02	–	E, 8
G1/4	3/2	Plunger /Spring	0,34	03 0600 02	03 8602 02	B, 3
G1/4	3/2	Roller /Spring	0,34	03 0602 02	03 8602 02	B, 6
G1/4	3/2	Roller lever /Spring	0,41	03 0611 02	03 8602 02	B, 9
G1/4	3/2	Roller /Pilot	0,39	03 0609 02	03 8612 02	D, 6
G1/4	3/2	Roller lever /Pilot	0,45	03 0624 02	03 8612 02	D, 9
G1/4	5/2	Plunger /Spring	0,46	X3 0640 02	03 8602 02	F, 3
G1/4	5/2	Roller /Spring	0,46	X3 0642 02	03 8602 02	F, 6
G1/4	5/2	Roller lever /Spring	0,53	X3 0651 02	03 8602 02	F, 9
G1/4	5/2	Roller /Pilot	0,50	X3 0649 02	03 8612 02	H, 6
G1/4	5/2	Roller lever /Pilot	0,57	X3 0664 02	03 8612 02	H, 9



Super X

Manually & mechanically actuated spool valve

In-line

3/2, 5/2 & 5/3, G $\frac{1}{8}$, G $\frac{1}{4}$

Manual

Port size	Function	Actuation	Mid position	Colour	kg	Model	Service kit	Drawing no.
G1/8	3/2	Button/spring	–	Black	0,15	03 0404 02	03 8408 02	A, 12
G1/8	3/2	Button/spring	–	Green	0,15	03 0405 02	03 8408 02	A, 12
G1/8	3/2	Button/spring	–	Red	0,15	03 0406 02	03 8408 02	A, 12
G1/8	3/2	Button (palm)/spring	–	Red	0,29	03 0366 02	03 8408 02	A, 15
G1/8	3/2	Button (palm)/spring	–	Green	0,29	03 0367 02	03 8408 02	A, 15
G1/8	3/2	Button (palm)/spring	–	Black	0,29	03 0368 02	03 8408 02	A, 15
G1/8	3/2	Button (shrouded)/spring	–	Black	0,21	03 0414 02	03 8408 02	A, 13
G1/8	3/2	Button (shrouded)/spring	–	Green	0,21	03 0415 02	03 8408 02	A, 13
G1/8	3/2	Button (shrouded)/spring	–	Red	0,21	03 0416 02	03 8408 02	A, 13
G1/8	3/2	Button/pilot	–	Black	0,22	03 0408 02	03 8408 02	D, 12
G1/8	3/2	Button/pilot	–	Green	0,22	03 0420 02	03 8408 02	D, 12
G1/8	3/2	Button/pilot	–	Red	0,22	03 0421 02	03 8408 02	D, 12
G1/8	3/2	Emergency stop/twist ring	–	Red	0,31	03 0428 02	03 8473 02	A, 16
G1/8	3/2	Button (palm)/key	–	Red	0,37	03 0335 02 801	03 8408 02	A, 17
G1/8	3/2	Lever/spring	–	Black	0,28	03 0438 02	03 8408 02	A, 23
G1/8	3/2	Lever knob/spring	–	Black	0,24	03 0426 02	03 8408 02	A, 19
G1/8	3/2	Lever/lever	–	Black	0,29	03 0437 02	03 8408 02	A, 23
G1/8	3/2	Toggle/toggle	–	Black	0,16	03 0403 02	03 8408 02	A, 22
G1/8	3/2	Knob/knob	–	Black	0,17	03 0425 02	03 8408 02	A, 21
G1/8	3/2	Knob/knob or pilot	–	Black	0,21	03 0424 02	03 8408 02	D, 21
G1/8	3/2	Rotary knob/rotary knob	–	Black	0,29	03 0419 02	03 8408 02	A, 27
G1/8	3/2	Key/key	–	Chrome	0,36	03 0418 02 801	03 8408 02	A, 28
G1/8	3/2	Pedal/spring	–	Black	1,03	03 0481 02	03 8408 02	29
G1/8	3/2	Pedal/pedal	–	Black	1,07	03 0483 02	03 8408 02	29
G1/8	5/2	Button/spring	–	Black	0,26	X3 0444 02	03 8408 02	E, 12
G1/8	5/2	Button/spring	–	Green	0,26	X3 0445 02	03 8408 02	E, 12
G1/8	5/2	Button/spring	–	Red	0,26	X3 0446 02	03 8408 02	E, 12
G1/8	5/2	Button (palm)/spring	–	Red	0,40	X3 0386 02	03 8408 02	E, 15
G1/8	5/2	Button (palm)/spring	–	Green	0,40	X3 0387 02	03 8408 02	E, 15
G1/8	5/2	Button (palm)/spring	–	Black	0,40	X3 0388 02	03 8408 02	E, 15
G1/8	5/2	Button (shrouded)/spring	–	Black	0,32	X3 0454 02	03 8408 02	E, 13
G1/8	5/2	Button (shrouded)/spring	–	Green	0,32	X3 0455 02	03 8408 02	E, 13
G1/8	5/2	Button (shrouded)/spring	–	Red	0,32	X3 0456 02	03 8408 02	E, 13
G1/8	5/2	Button/pilot	–	Black	0,34	X3 0448 02	03 8408 02	G, 12
G1/8	5/2	Button/pilot	–	Green	0,34	X3 0460 02	03 8408 02	G, 12
G1/8	5/2	Button/pilot	–	Red	0,34	X3 0461 02	03 8408 02	G, 12
G1/8	5/2	Knob, push/knob, pull	–	Black	0,28	X3 0465 02	03 8408 02	E, 26
G1/8	5/2	Emergency stop/twist ring	–	Red	0,54	X3 0468 02	03 8473 02	E, 16
G1/8	5/2	Button (palm)/key	–	Red	0,48	X3 0375 02 801	03 8408 02	E, 17
G1/8	5/2	Lever/spring	–	Black	0,40	X3 0478 02	03 8408 02	E, 22
G1/8	5/2	Lever knob/spring	–	Black	0,35	X3 0466 02	03 8408 02	E, 19
G1/8	5/2	Toggle/toggle	–	Black	0,27	X3 0443 02	03 8408 02	E, 24
G1/8	5/2	Lever/lever	–	Black	0,40	X3 0477 02	03 8408 02	E, 23
G1/8	5/2	Knob/knob or pilot	–	Black	0,32	X3 0464 02	03 8408 02	G, 21
G1/8	5/2	Rotary knob/rotary knob	–	Black	0,40	X3 0459 02	03 8408 02	E, 27
G1/8	5/2	Key/key	–	Chrome	0,47	X3 0458 02 801	03 8408 02	E, 28
G1/8	5/2	Pedal/spring	–	Black	1,12	X3 0482 02	03 8408 02	29
G1/8	5/2	Pedal/pedal	–	Black	1,18	X3 0484 02	03 8408 02	29
G1/8	5/3	Lever/spring/lever	APB	Black	0,85	X3 3438 02	03 8408 02	J, 32
G1/8	5/3	Lever/spring/lever	COE	Black	0,85	X3 3478 02	03 8408 02	J, 32
G1/8	5/3	Lever/lever/lever	APB	Black	0,44	X3 3437 02	03 8408 02	J, 32
G1/8	5/3	Lever/lever/lever	COE	Black	0,44	X3 3477 02	03 8408 02	J, 32
G1/4	3/2	Button/spring	–	Black	0,35	03 0604 02	03 8602 02	B, 14
G1/4	3/2	Button/pilot	–	Black	0,42	03 0608 02	03 8612 02	D, 14
G1/4	3/2	Lever/spring	–	Black	0,48	03 0638 02	03 8602 02	B, 31
G1/4	3/2	Lever/lever	–	Black	0,49	03 0637 02	03 8602 02	B, 31
G1/4	3/2	Knob/knob	–	Black	0,37	03 0625 02	03 8602 02	B, 20
G1/4	3/2	Knob/knob or pilot	–	Black	0,41	03 0627 02	03 8612 02	D, 20
G1/4	3/2	Pedal/spring	–	Black	1,23	03 0681 02	03 8602 02	29
G1/4	3/2	Pedal/pedal	–	Black	1,27	03 0683 02	03 8602 02	29
G1/4	5/2	Button/spring	–	Black	0,47	X3 0644 02	03 8602 02	F, 14
G1/4	5/2	Button/pilot	–	Black	0,54	X3 0648 02	03 8612 02	H, 14
G1/4	5/2	Lever/spring	–	Black	0,60	X3 0678 02	03 8602 02	F, 31
G1/4	5/2	Lever/lever	–	Black	0,61	X3 0677 02	03 8602 02	F, 31
G1/4	5/2	Knob/knob	–	Black	0,49	X3 0665 02	03 8602 02	29
G1/4	5/2	Pedal/spring	–	Black	1,33	X3 0682 02	03 8602 02	29
G1/4	5/2	Pedal/pedal	–	Black	1,39	X3 0684 02	03 8602 02	J, 32
G1/4	5/3	Lever/spring/lever	APB	Black	1,06	X3 3638 02	03 8602 02	J, 32
G1/4	5/3	Lever/spring/lever	COE	Black	1,06	X3 3678 02	03 8602 02	J, 32
G1/4	5/3	Lever/lever/lever	APB	Black	0,65	X3 3637 02	03 8602 02	J, 32
G1/4	5/3	Lever/lever/lever	COE	Black	0,65	X3 3677 02	03 8602 02	J, 32

APB = All Ports Blocked COE = Centre Open Exhaust

Valves

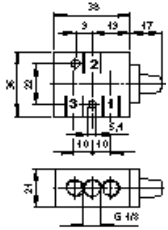
Super X

Manually & mechanically actuated spool valves

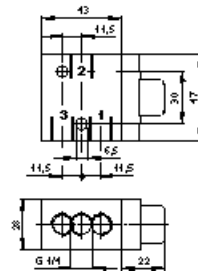
In-line

3/2, 5/2 & 5/3, G1/8, G1/4

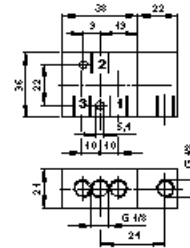
G1/8, 3/2 Spring return, basic body



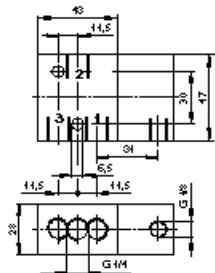
G1/4, 3/2 Spring return, basic body



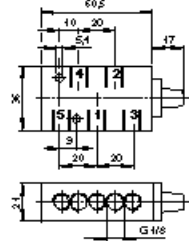
G1/8, 3/2 Pilot return, basic body



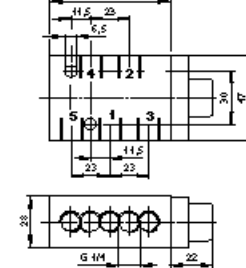
G1/4, 3/2 Pilot return, basic body



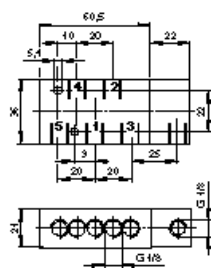
G1/8, 5/2 Spring return, basic body



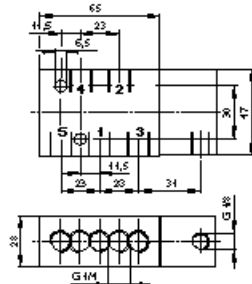
G1/4, 5/2 Spring return, basic body



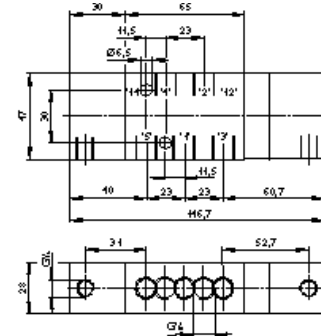
G1/8, 5/2 Pilot return, basic body



G1/4, 5/2 Pilot return, basic body

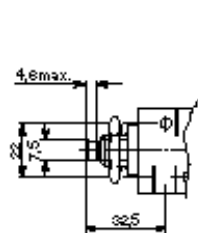


G1/4, 5/3 Spring return, basic body

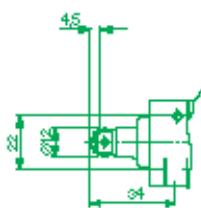


Mechanical valve actuators

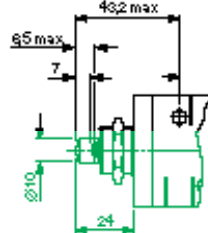
Plunger – G1/8 valves



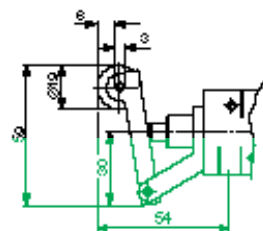
Roller – G1/8 valves



Plunger – G1/4 valves



Roller lever – G1/8 valves



Super X

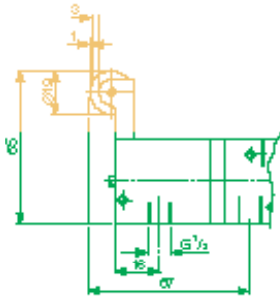
Manually & mechanically actuated spool valves

In-line

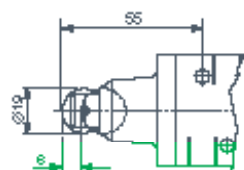
3/2, 5/2 & 5/3, G $\frac{1}{8}$, G $\frac{1}{4}$

Mechanical valve actuators

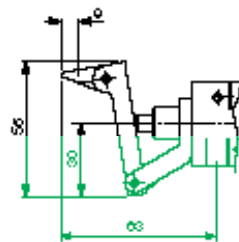
Sensitive roller lever – G1/8 valves **5**



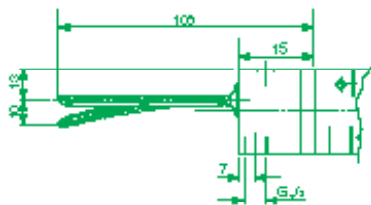
Roller – G1/4 valves **6**



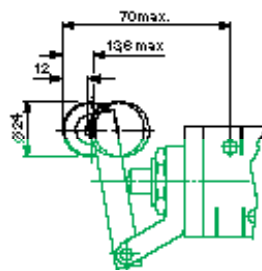
One way trip – G1/8 valves **7**



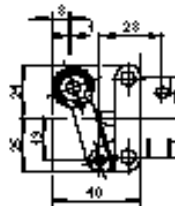
Antenna – G1/8 valves **8**



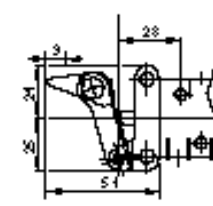
Roller lever – G1/4 valves **9**



Heavy duty roller lever – G1/8 valves **10**

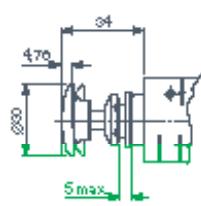


Heavy duty one-way trip – G1/8 valves **11**

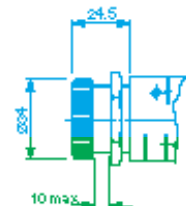


Manual valve actuators

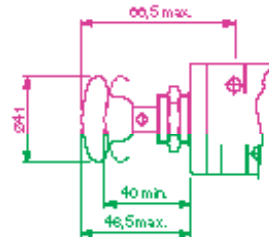
Button – G1/8 valves **12**



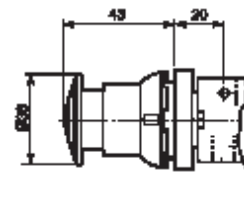
Button (shrouded) – G1/8 valves **13**



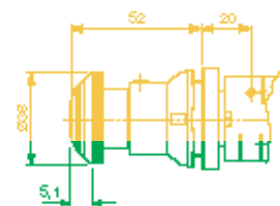
Button – G1/4 valves **14**



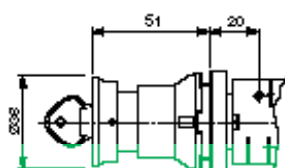
Button (palm) – G1/8 valves **15**



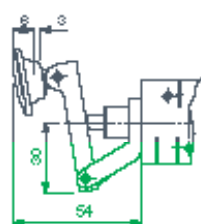
Emergency stop – G1/8 valves **16**



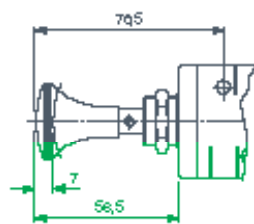
Button/key – G1/8 valves **17**



Lever/knob – G1/8 valves **19**



Knob – G1/4 valves **20**



Knob – G1/8 valves **21**

