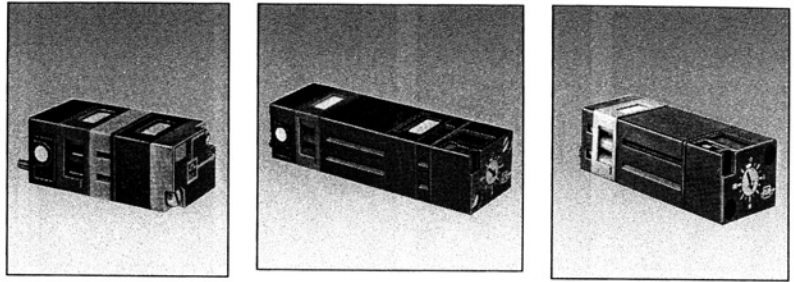


Timers



Part numbers

Single impulse generator	Fixed	81 507 540	—	—
	Adjustable	—	81 507 720	—
Adjustable frequency generator		—	—	81 506 940

1

Symbol



Characteristics

Timing	s	0.4	0.1 - 30	—
Frequency	Hz	—	—	0.02 - 8
Operating pressure	bar	2 - 8	2 - 8	2 - 8
Flow at 6 bars	NI/min	170	170	170
Orifice diameter	mm	2.7	2.7	2.7
Accuracy	%	± 5	± 5	± 5
Min. reset time	s	<0.1	<0.1	<0.1
Connection - On sub-base page 4/14 - 4/15		●	●	●
Operating temperature	°C	-5 +50	-5 +50	-5 +50
Mechanical life	operations	>10 ⁷	>10 ⁷	>10 ⁷
Weight	g	106	180	85

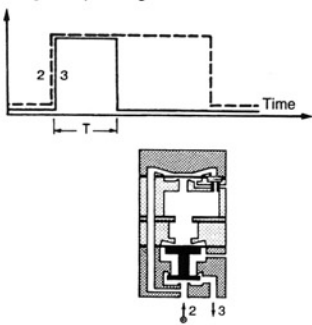
Accessories

Panel mounting adaptors	—	79 451 904	79 451 905
Weight (g)	—	53	53

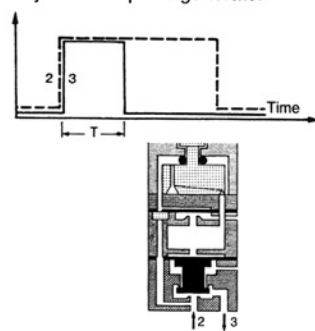
2

Principle of operation

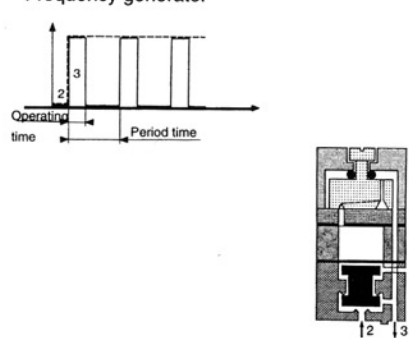
Single impulse generator



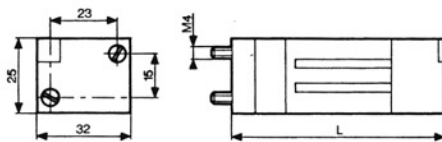
Adjustable impulse generator



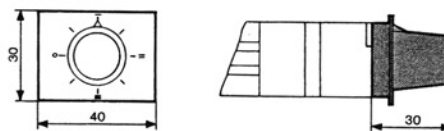
Frequency generator



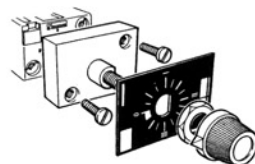
Dimensions



79 451



Part numbers	L (mm)
81 507 540	73
81 507 720	99
81 506 940	72



For panel mounting, a pre-drilled hole Ø 10.5 mm is required

To order, specify :

Standard products

1

Part number

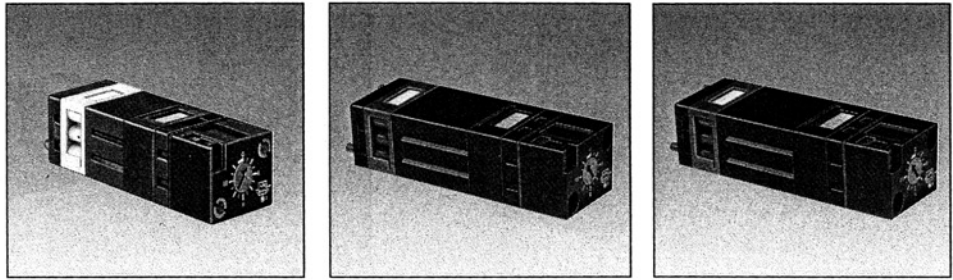
2

Accessory

Standard products, non stocked

Example : Timer 81 507 720 - Panel mounting adaptor 79 451 904

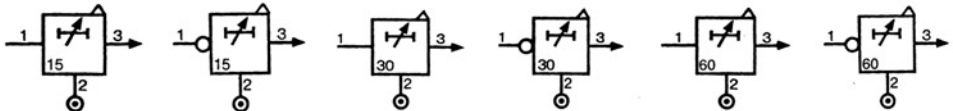
Timers (with adjustable timing)



Part numbers

	81 503 710	81 506 710	81 503 720	81 506 720	81 503 725	81 506 725
Function positive	●	—	●	—	●	—
Function negative	—	●	—	●	—	●

Symbol



Characteristics

Timing	s	0.1 • 15	0.1 • 15	0.1 • 30	0.1 • 30	0.1 • 60	0.1 • 60
Operating pressure	bar	2 → 8	2 → 8	2 → 8	2 → 8	2 → 8	2 → 8
Flow at 6 bars	NI/min	170	170	170	170	170	170
Orifice diameter	mm	2.7	2.7	2.7	2.7	2.7	2.7
Accuracy	%	± 5	± 5	± 5	± 5	± 5	± 5
Min. reset time	s	<0.1	<0.1	<0.1	<0.1	<0.1	<0.1
Connection		●	●	●	●	●	●
Operating temperature	°C	-5 +50	-5 +50	-5 +50	-5 +50	-5 +50	-5 +50
Mechanical life	operations	>10 ⁷	>10 ⁷	>10 ⁷	>10 ⁷	>10 ⁷	>10 ⁷
Weight	g	90	90	100	100	120	120

Accessories

Panel mounting adaptor		79 451 698	79 451 698	79 451 903	79 451 903	—	—
Weight	g	53	53	53	53	—	—

Principle

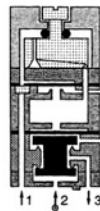
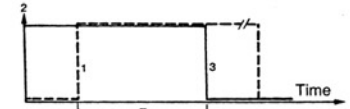
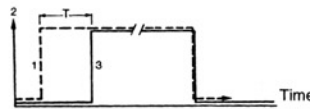
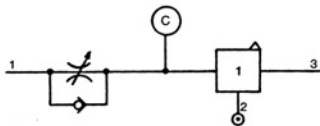
The operation of these pneumatic timers is similar to that of electronic timers (circuit with capacitor/resistor)

Principle of operation

with positive output

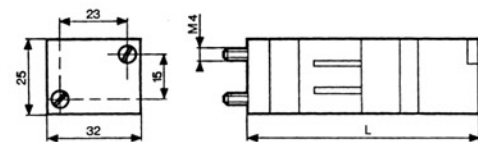
with negative output

Timing by charging of reservoir



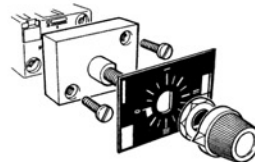
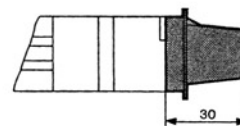
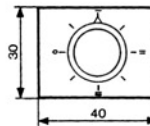
The reservoir fills via the flow restrictor until the switching pair of the timer output is reached (positive or negative).
The non-return valve allows the reservoir to be emptied rapidly for the next timing.

Dimensions



Part numbers	L (mm)
81 503 710 - 81 506 710	78
81 503 720 - 81 506 720	92
81 503 725 - 81 506 725	125

Adaptor 79 451 ...



For panel mounting, a pre-drilled hole Ø 10.5 mm is required

To order, specify :

Standard products

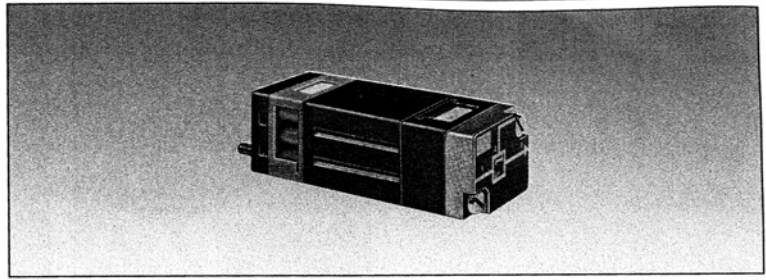
1 Part number

2 Accessory

Standard products, non stocked

Example : Timers (with adjustable timing) - 81 503 710 - Adaptor 79 451 698

Timers (with fixed timing)



1

Part numbers

81 503 540

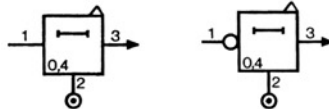
81 506 540

Version

Positive output

Negative output

Symbol



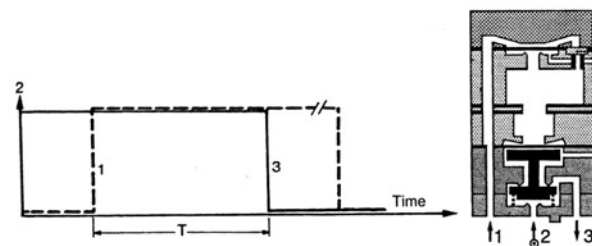
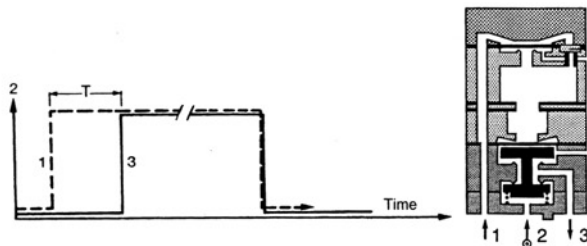
Characteristics

Timing	s	0.4	0.4
Operating pressure	bar	2 - 8	2 - 8
Flow at 6 bars	NI/min	170	170
Orifice diameter	mm	2.7	2.7
Accuracy	%	± 5	± 5
Min. reset time	s	<0.1	<0.1
Connection - On sub-base page 4/14 - 4/15			
Operating temperature	°C	-5 +50	-5 +50
Mechanical life	operations	>10 ⁷	>10 ⁷
Weight	g	106	106

Principle of operation

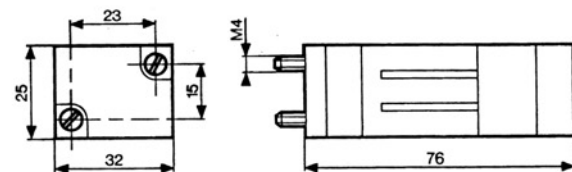
with positive output

with negative output



Dimensions

81 503 540 - 81 506 540



Other information

To order, specify :

Standard products

1 Part number

Example : Timers (with fixed timing) - 81 503 540

Standard products,
non stocked