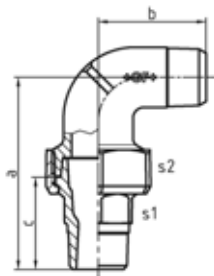




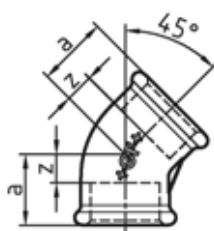
103 Union elbow, taper seat

Torque and notes for installation please find in "Technical Product Notes".
374 G ... refers to the thread size G according to ISO 228 of the union nut 374.



EN		Dim. [inch]	374 G [inch]	Code	a [mm]	b [mm]	c [mm]	s1 [mm]	s2 [mm]
-	B	1/2	1	770 103 104	76	39	40.5	25	39
-	G	1/2	1	770 103 204	76	39	40.5	25	39
-	B	3/4	1 1/4	770 103 105	81	43	42.5	32	48
-	G	3/4	1 1/4	770 103 205	81	43	42.5	32	48
-	B	1	1 1/2	770 103 106	93	52	47.5	38	55
-	G	1	1 1/2	770 103 206	93	52	47.5	38	55

120 Elbow 45°, ISO/EN A1/45°



EN		Dim. [inch]	Code	a [mm]	z [mm]
•	B	3/8	770 120 103	20	10
•	G	3/8	770 120 203	20	10
•	B	1/2	770 120 104	22	9
•	G	1/2	770 120 204	22	9
•	B	3/4	770 120 105	25	10
•	G	3/4	770 120 205	25	10
•	B	1	770 120 106	28	11
•	G	1	770 120 206	28	11
•	B	1 1/4	770 120 107	33	14
•	G	1 1/4	770 120 207	33	14
•	B	1 1/2	770 120 108	36	17
•	G	1 1/2	770 120 208	36	17
•	B	2	770 120 109	43	19
•	G	2	770 120 209	43	19
-	B	2 1/2	770 120 110	48	21
-	G	2 1/2	770 120 210	48	21
-	B	3	770 120 111	54	24
-	G	3	770 120 211	54	24