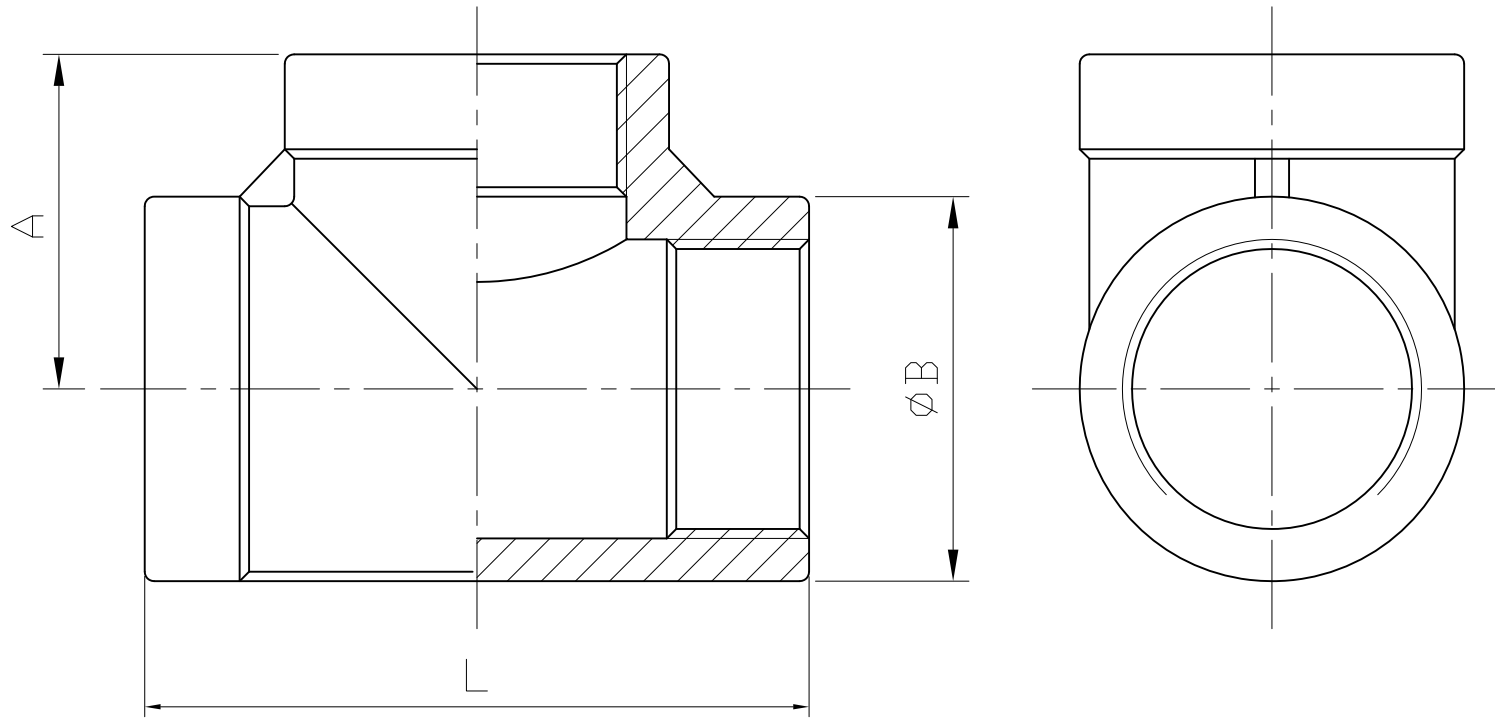


TEE



SIZE	1/8"		1/4"		3/8"		1/2"		3/4"		1"		1-1/4"		1-1/2"		2"		2-1/2" (NPT)		2-1/2" (PS)		3"		4"	
	mm	in	mm	in	mm	in	mm	in	mm	in	mm	in	mm	in	mm	in	mm	in	mm	in	mm	in	mm	in	mm	in
A	17	0.67	19.5	0.77	22	0.87	27.5	1.08	30	1.18	35	1.38	42.5	1.67	44.5	1.75	53.5	2.11	68	2.68	66	2.6	72	2.83	91	3.58
B	15	0.59	18.5	0.73	22	0.87	25.5	1	32.2	1.27	39.5	1.56	49	1.93	56	2.2	67.6	2.66	84.5	3.33	87.5	3.44	100	3.94	126	4.96
L	34	1.34	39	1.54	44	1.73	55	2.17	60	2.36	70	2.76	85	3.35	88.5	3.48	107	4.21	128	5.04	129	5.08	144	5.67	180	7.09

Tolerance: $\pm 0.5\text{mm}(1/8''\sim 2'')$
 $\pm 0.8\text{mm}(2-1/2''\sim 4'')$

HAITIMA CORPORATION
 P.O.BOX 34-36 TAIPEI
 Tel:+886-2-26585800
 E-mail:haitima@seednet.tw
 TAIWAN R.O.C. www.haitimo.com.tw
 Fax:+886-2-26582266



HAITIMA CORPORATION
 Ball Valves & Pipe Fittings

CHECK BY	DRAWING BY	DATE	SPECIFICATION	Tee
	<i>Dune</i>	Jun.29.2009	MATERIAL	304/316
			PROCESS/Nr.	
			UNIT / SCALE	mm

Revise	Description	Date	Approve
DRAWING NO. F04		-09	