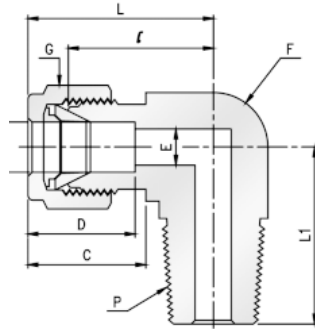


# Brass Twin Ferrule Metric Tube Fitting



## Male Elbow Connector, BSPT



Part No.	Tube O.D T mm	P NPT	E mm	f mm	G mm	C	D	L	L1
ME-4-250RT-B	4	1/4	2.4	12.7	12	13.7	16.1	25.4	23.4
ME-6-125RT-B	6	1/8	4.8	12.7	14	15.3	17.7	27.0	18.8
ME-6-250RT-B	6	1/4	4.8	12.7	14	15.3	17.7	27.0	23.4
ME-6-375RT-B	6	3/8	4.8	17.5	14	15.3	17.7	29.8	26.2
ME-6-500RT-B	8	1/8	4.8	14.3	16	16.2	18.6	28.8	19.8
ME-8-250RT-B	8	1/4	6.4	14.3	16	16.2	18.6	28.8	24.4
ME-8-375RT-B	8	3/8	6.4	17.5	16	16.2	18.6	31.4	28.5
ME-10-250RT-B	10	1/4	7.1	17.5	19	17.2	19.5	31.5	28.2
ME-10-375RT-B	10	3/8	7.9	17.5	19	17.2	19.5	31.5	28.2
ME-10-500RT-B	10	1/2	7.9	20.6	19	17.2	19.5	33.5	33.0
ME-12-250RT-B	12	1/4	7.1	20.6	22	22.8	22.00	36.0	28.2
ME-12-375RT-B	12	3/8	9.5	20.6	22	22.8	22.00	36.0	28.2
ME-12-500RT-B	12	1/2	9.5	20.6	22	22.8	22.00	36.0	33.0
ME-16-500RT-B	16	1/2	11.9	25.4	25	24.4	22.00	38.0	35.1
ME-20-750RT-B	20	3/4	15.9	31.8	32	26.0	22.00	44.6	41.7
ME-22-750RT-B	22	3/4	15.9	31.8	32	26.0	22.00	44.6	41.7