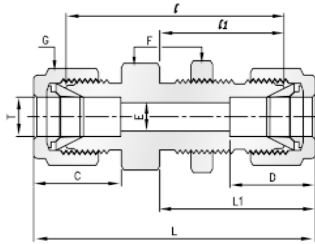
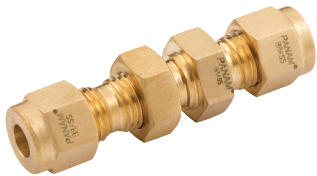


# Brass Twin Ferrule Imperial Tube Fitting



## Bulkhead Union, Tube x Tube



Part No.	Tube O.D T mm	T mm	E mm	F mm	G mm	C	D	I	I1	L	L1	PANEL HOSE DRILL SIZE	MAX PANEL THICKNESS
BU-4-B	4	2.4	14	14.3	12	13.7	15.3	40.4	25.4	53.6	32.0	9.9	12.7
BU-6-B	6	4.8	16	15.9	14	15.3	16.1	42.9	26.2	57.7	33.6	11.5	10.2
BU-8-B	8	6.4	16	17.5	16	16.2	17.7	46.0	28.6	61.0	36.1	13.1	11.2
BU-10-B	10	7.9	22	22.0	19	17.2	18.6	48.5	29.4	63.7	37.0	16.2	11.2
BU-12-B	12	9.5	24	23.8	22	22.8	19.5	50.8	31.8	71.0	41.9	19.5	12.7
BU-16-B	16	12.7	27	27.0	25	24.4	22.0	52.3	32.5	72.5	42.6	22.8	12.7
BU-20-B	20	15.9	35	35.0	32	26.0	22.0	64.3	42.9	84.5	53	29	17
BU-22-B	22	18.3	35	35.0	32	26.0	22.0	64.3	42.9	84.5	53	29	19.1
BU-25-B	25	21.8	41.3	41.3	38	31.3	26.5	71.4	45.2	95.9	57.5	33.7	19.1