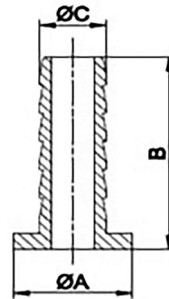


# Brass, Lugged, Screw-together Couplings

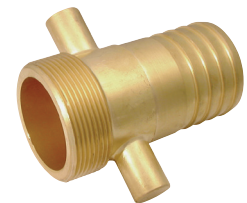
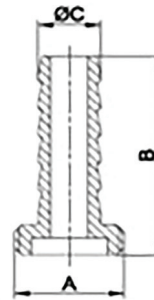
## Female Linings

Part No:	A	B	C
STCL-12	18	31.3	14.1
STCL-34	23.7	40.5	19.7
STCL-1	29	40.6	26.1
STCL-114	38	49.2	31.7
STCL-112	44.5	73	37.8
STCL-2	55.5	76.5	50.6
STCL-34	84	101.5	75.6

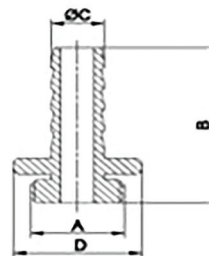


## Male Threaded Half

Part No:	A	B	C
STCM-12	G1/2	36.4	14.1
STCM-34	G3/4	44	19.7
STCM-1	G1	52.4	26.1



Part No:	A	B	C	D
STCM-114	G1/4	72	31.7	58
STCM-112	G1/2	92	37.8	87.5
STCM-2	G2	102	50.5	100
STCM-3	G3	118	76	128.5



## Collar

Part No:	A	B	C	D
STCC-12	44.5	24.5	G1/2	13.8
STCC-34	59	31	G3/4	15
STCC-1	65	36.5	G1	16.2
STCC-114	74.5	46.5	G1.1/4	22
STCC-112	87	55	G1.1/2	24
STCC-2	95	67	G2	23
STCC-3	139	97.5	G3	28.5

