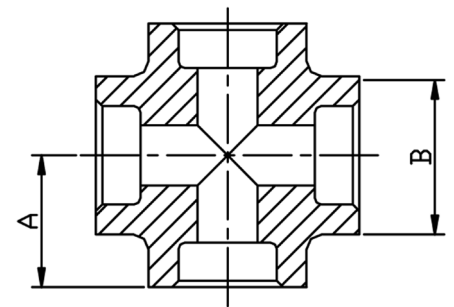


Equal Cross

Technical Data

- Socket weld ends (SW)
- Dimensions to ANSI B16.11/BS3799
- 3000 LB rating
- Sizes 1/2" to 1"
- 316L stainless steel
- Other sizes are available



| SIZE | PART No | A | B | Kg/100 |
|------|-----------|----|----|--------|
| 1/2 | 1012-0083 | 25 | 33 | 36.0 |
| 3/4 | 1012-0084 | 32 | 38 | 45.0 |
| 1 | 1012-0085 | 35 | 46 | 76.0 |