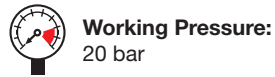


Stainless Steel Valves

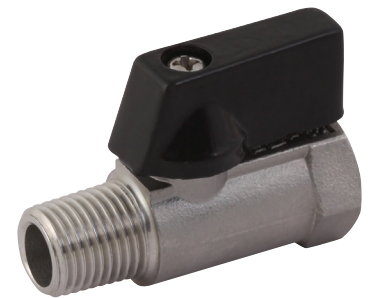


316 Stainless Steel Mini Valves

Seal: PTFE



Male x Female, BSPP					
Part No	D	L	H	W.P	Temp. Range
981-1/4	4.6	46	26	20 bar	-20C to + 200C
981-3/8	7	51	28	20 bar	-20C to + 200C
981-1/2	9	59	30	20 bar	-20C to + 200C



NUMBER	PART NAME	MATERIAL	QTY
1	Body	316	1
2	Ball	316	1
3	Seat	PTFE	2
4	Insert	316	1
5	Stem	304	1
6	Thrust Washer	PTFE	1
7	O-ring	NBR	2
8	Handle	304	1
9	Conical Spring Washer	304	1

