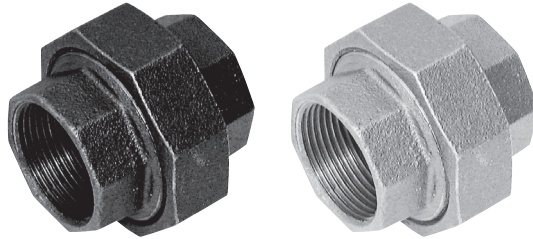
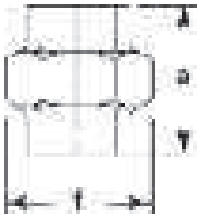


Malleable Iron Pipe Fittings

CRANE

Female Equal Union, Spherical Seat Bronze to Iron (Fig 271)



FITTING SIZE	DIMENSIONS (mm)		WEIGHT (kg) per 100 pieces
	a	f	
1/8	42	32	12.26
1/4	42	32	11.03
3/8	45	36	14.54
1/2	49	42	20.69
3/4	53	49	30.33
1	58	57	40.79
1 1/4	64	68	59.64
1 1/2	68	76	77.87
2	75	92	120.10
2 1/2	84	111	187.15
3	92	125	247.81
4	107	155	432.60