

ISO15552 Standard Cylinder Guides



With Slide Bearings

Guide Units H for Cyl. ISO15552

CODE: RF

Cylinder (mm)

With Slide Bearing = 0

With Ball Bearings = 1

Stroke (mm)

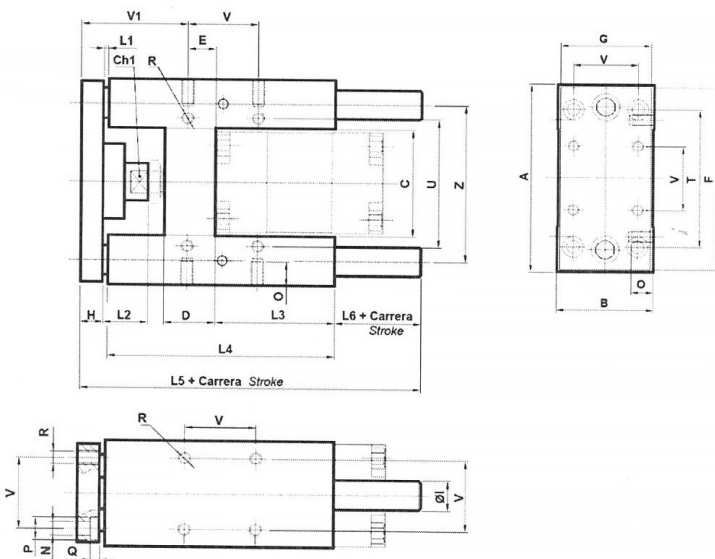
Order Code Guide Unit H Slide Hearing 50 stroke 200

CODE: RF 050 0 0200



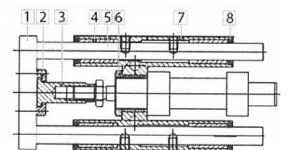
Dimensions

Ø32-Ø100



Materials

- 1 Aluminium
- 2 Steel
- 3 Steel
- 4 Ball Bushings: Steel
Slide Bearings: Bronze
- 5 Chromed Steel
- 6 Steel
- 7 Aluminium
- 8 NBR



Ø	A	B	C	Ch	D	E	F	G	H	I	L1	L2	L3	L4	L5	L6	N	O	P	Q	R	T	U	V	V1	Z
32	97	49	51	15	4	4.3	93	45	12	12	3	19	75	125	187	47	6.6	12	11	6.5	M6	78	61	32.5	60.7	74
40	115	58	58.2	15	28	11	112	55	12	16	3	24	80	140	207	52	6.6	12	11	6.5	M6	84	69	38	64	87
50	137	70	70.2	20	34	18.8	134	65	15	20	3	27	78	148	223	57	9	16	15	8.5	M8	100	85	46.5	69.2	104
63	152	85	85.2	20	34	15.3	147	80	15	20	3	27	106	178	243	47	9	16	15	9	M8	105	100	56.5	74.7	119
80	189	105	105.5	26	50	25	180	100	20	25	3	27	111	195	267	49	11	20	18	11	M10	130	130	72	82	148
100	213	130	130.5	26	55	30	206	120	20	25	3	27	128	218	290	49	11	20	18	11	M10	150	150	89	83	173

Kit Guide Units H

CODE: RF

Cylinder (mm)

With Slide Bearing = 0

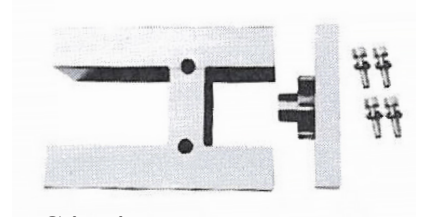
With Ball Bearings = 1

Order Code Kit Guide Unit H Slide Bearing 63

CODE: RF 063 0 0000

Kit Includes

- 1x Body
- 1 x Plate with coupling
- 4 x screws



- Ø (mm)**
- 16
 - 20
 - 25
 - 32
 - 40
 - 50
 - 63
 - 80
 - 100

Rod for Guide Units H

COD: F1140

Ø Cylinder (mm)

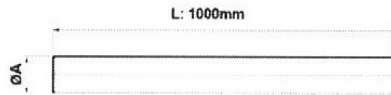
With Slide Bearing = 0

With Ball Bearings = 1

Order Code Rod For Guide Unit H Slide Bearings

CODE: F1140 020 0

Ø Cylinder mm	A	
	With Slide Bearings	With Ball Bushings
16	10	8
20-25	12	10
32	12	12
40	16	16
50	20	20
63	20	20
80	25	25
100	25	25



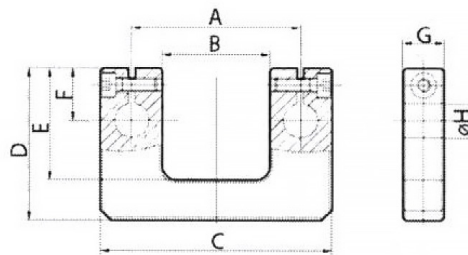
It's supplied in Rod length 1000mm

Read Ends Plates for Guide Units H

CODE: RF

Cylinder (mm)

COD: RF 032



Ø	A	B	C	D	E	F	G	H1	H2
15	40.6	31.5	68	45	33	15.5	12	10	8
20-25	58	37	78	50	34	15.5	12	12	10
32	74	51	95	70	48	23	12	12	12
40	87	58.2	113	80	55	36	12	16	16
50	104	70.2	134	100	67.5	32.5	15	20	20
63	119	91	147	120	82	39.5	15	20	20
80	148	105.5	185	150	101	48.5	20	25	25
100	173	137	209	165	114	49	20	25	25

H1 With Slide Bearing

H2 With Ball Bearings

Guide Units H for Cyl ISO 6432

CODE: RF

Cylinder (mm)

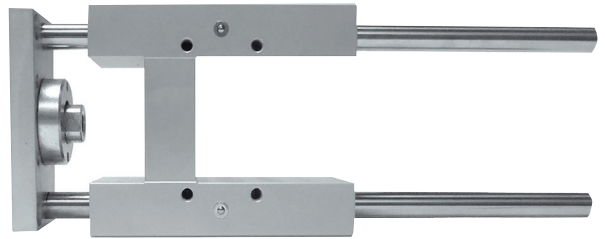
With Slide Bearing = 0

With Ball Bearings = 1

Stroke (mm)

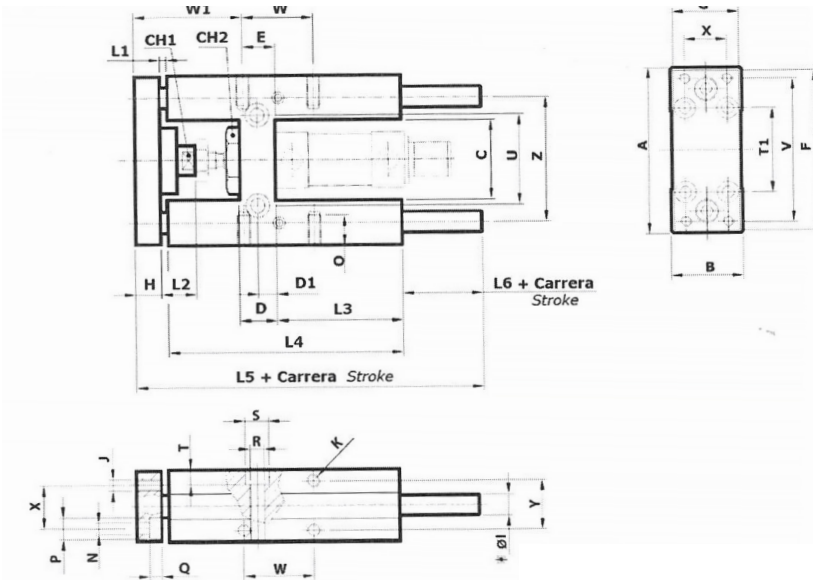
Order Code Guide Unit H Slide Hearing 50 stroke 200

CODE: RF 020 0 0050



Dimensions

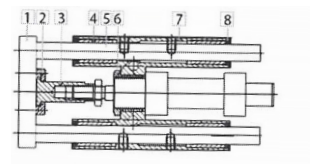
Ø16-Ø25



Ø1 With Slide Bearing
Ø2 With Ball Bearings

Materials

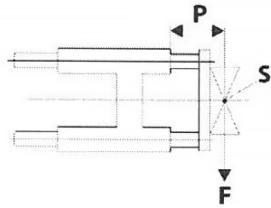
- 1 Aluminium
- 2 Steel
- 3 Steel
- 4 Ball Bushings: Steel
Slide Bearings: Bronze
- 5 Chromed Steel
- 6 Steel
- 7 Aluminium
- 8 NBR



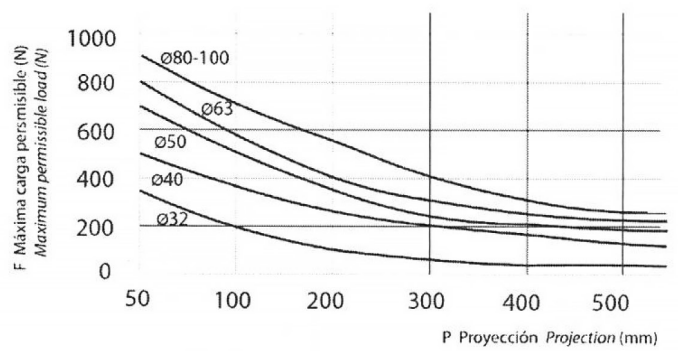
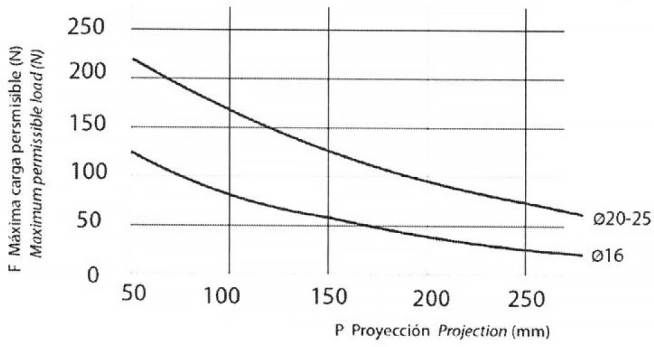
Ø	A	B	C	Ch1	Ch2	Ch3	D	D1	E	F	G	H	Ø1	Ø2	J	K	L1	L2	L3
16	69	30	30	8	10	24	12	6	8	66	29	10	10	8	M4	M4	25	18	46
20	79	34	37	12	13	27	17	8.5	15	78	32	12	12	10	M5	M6	3	18	58
25	79	34	37	12	17	27	17	8.5	15	78	32	12	12	10	M5	M6	3	18	58

Ø	L4	L5	L6	L7	M	N	O	P	Q	R	S	T	T1	U	V	W	W1	X	Y	Z
16	68	123.5	73	20.5	4	4.5	6	8	4.5	5.5	9	5.5	32	24	58	18		18	22	49.5
20	108	166	43	21	5	5.5	9	10	7.5	6.5	11	6.5	38	38	68	32.5	50	20	23	58
25	108	166	43	21	5	5.5	9	10	7.5	6.5	11	6.5	38	38	68	32.5	50	20	23	58

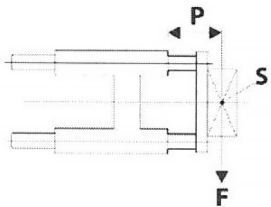
With Slide Bearing



P -> Proyección
Projection
S -> Centro de gravedad de la carga útil
Centre of gravity of working load
F -> Carga permisible
Permissible load



With Ball Bearings



P -> Proyección
Projection
S -> Centro de gravedad de la carga útil
Centre of gravity of working load
F -> Carga permisible
Permissible load

