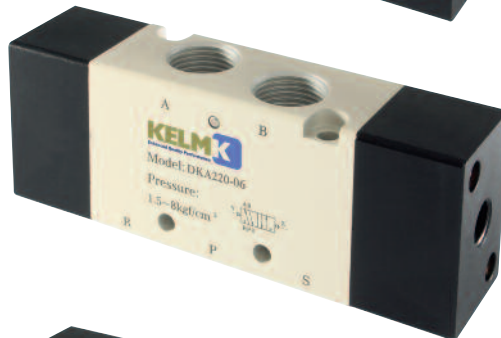


PILOT VALVES (5/2 & 5/3 WAY)

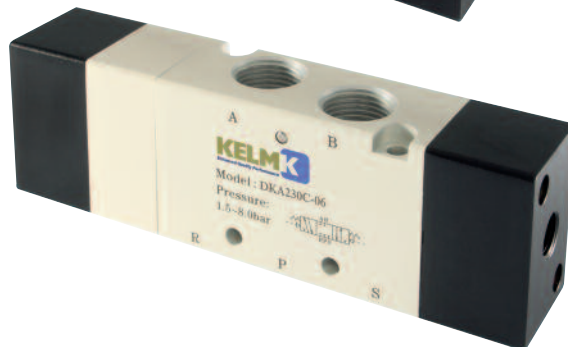
5/2 Way Valves -
Pilot Spring



5/2 Way Valves -
Pilot Pilot



5/3 Way Valves -
Pilot Spring Pilot



Installation & Application Data

- 1) Before installing, be sure the valve hasn't been damaged in transit.
- 2) It is suggested to use clean lubricated air filtered to 40µm. Be aware of the flow direction and port size.
- 3) Please note that the installation conditions meet the technical requirements (such as actuation frequency, working pressure and temperature before installing the valve).
- 4) Notice the flow direction of air during installation, P is the air input port, A (B) is the outlet ports and R (S) is the exhaust ports.
- 5) Avoid freezing temperatures and vibration.

PILOT, LOGIC & SPECIALIST VALVES

PILOT VALVE (5/2 & 5/3 WAY)

DKA200 SERIES

Specification

| Model | DKA210-06 DKA220-06 | DKA230C-06 DKA230E-06 DKA230P-06 | DKA210-08 DKA220-08 | DKA230C-08 DKA230E-08 DKA230P-08 |
|--------------------|---|--|----------------------------------|--|
| Fluid | Air (to be filtered by 40µm filter element) | | | |
| Acting | Exterior Control | | | |
| Port | 1/8" | | Inlet & Outlet 1/4" Exhaust 1/8" | |
| Orifice | 14.0mm ² (Cv=0.78) | 12.0mm ² (Cv=0.67) | 16.0mm ² (Cv=0.89) | 12.0mm ² (Cv=0.67) |
| Valve Type | 5/2 | 5/3 | 5/2 | 5/3 |
| Operating Pressure | 0.15-0.8MPa(21-114psi) | | | |
| Proof Pressure | 1.5MPa(215psi) | | | |
| Temperature | -20 to + 70C | | | |
| Material of Body | Aluminum Alloy | | | |
| Lubrication | Not required | | | |
| Max. Frequency | 5 cycle/sec | 3 cycle/sec | 5 cycle/sec | 3 cycle/sec |
| Weight | DKA210-06 185g DKA220-06 285g | 365g | DKA210-08 185g DKA220-08 285g | 365g |

- G threads as standard. PT & NPT thread are available on request
- If using lubricants the practice must remain constant for the life of the valve.
Lubricants like ISO VG32 or equivalent are recommended;
- The maximum actuation frequency is in the no-load state.



Symbol

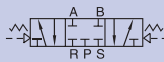
Pilot Spring



Pilot Pilot



Fully Sealed



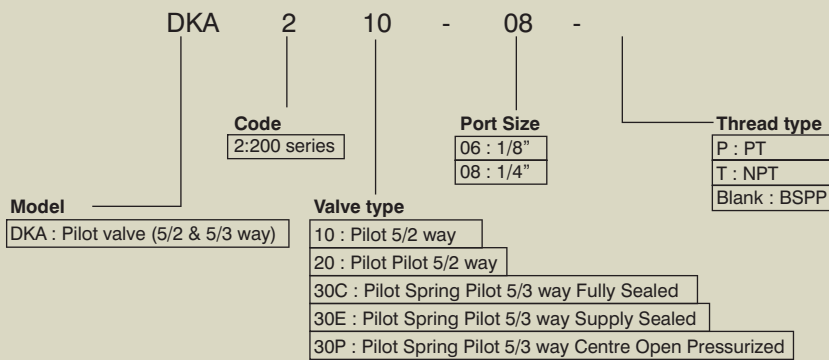
Supply Sealed



Centre Open Pressurized



Ordering Code

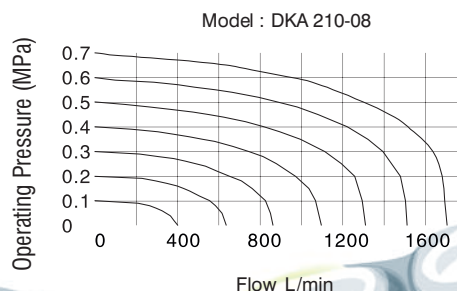
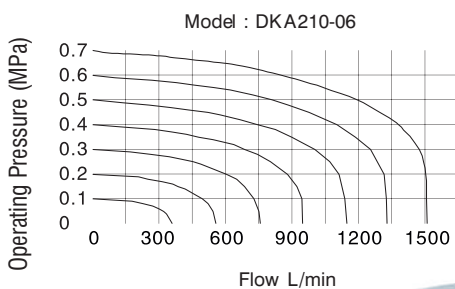


Product Features

- Close tolerance sliding spool for quick reaction
- Double pilot valves have memory function
- Low friction, low start pressure and long service life
- No need to add oil for lubrication
- Multi-mounting for ease of installation

Please refer to pages 11 & 12 for manifolds to suit

Flow Chart



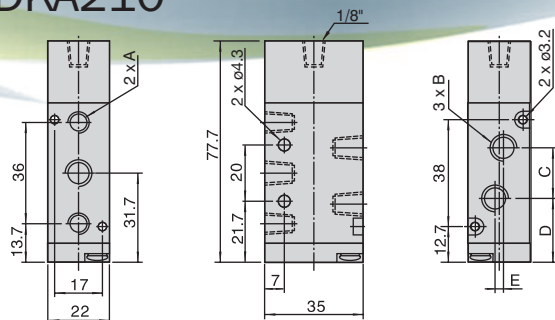
PILOT, LOGIC & SPECIALIST VALVES

PILOT VALVE (5/2 & 5/3 WAY)

DKA200 SERIES

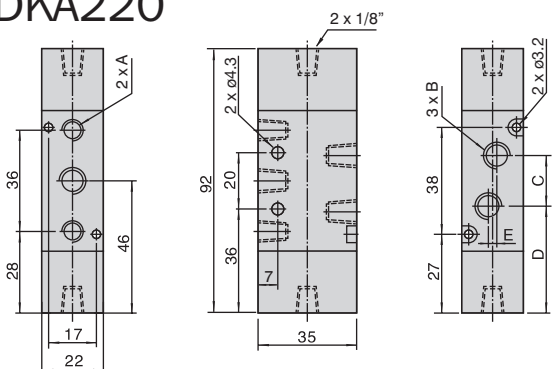
Dimensions

DKA210



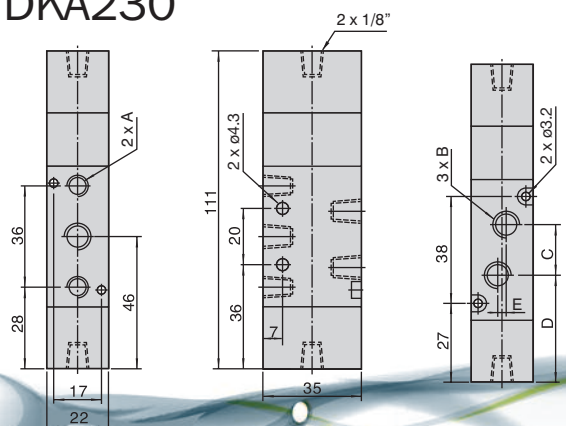
| Model | A | B | C | D | E |
|-----------|------|------|----|------|---|
| DKA210-06 | 1/8" | 1/8" | 18 | 22.7 | 0 |
| DKA210-08 | 1/8" | 1/4" | 21 | 21.2 | 3 |

DKA220



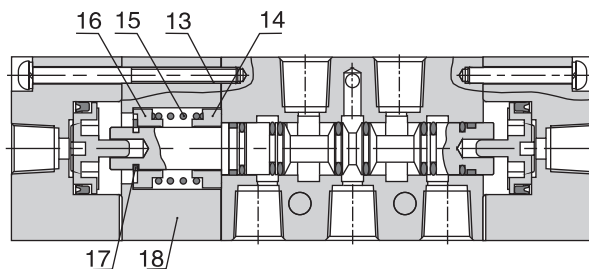
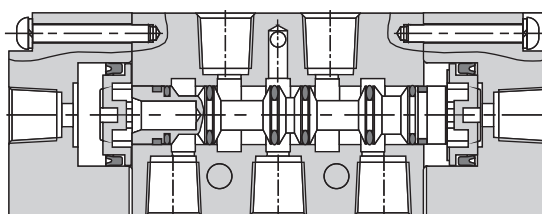
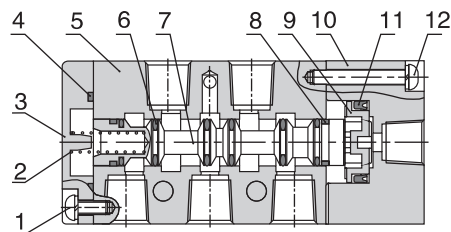
| Model | A | B | C | D | E |
|-----------|------|------|----|------|---|
| DKA220-06 | 1/8" | 1/8" | 18 | 37 | 0 |
| DKA220-08 | 1/8" | 1/4" | 21 | 35.5 | 3 |

DKA230



| Model | A | B | C | D | E |
|-----------|------|------|----|------|---|
| DKA230-06 | 1/8" | 1/8" | 18 | 37 | 0 |
| DKA230-08 | 1/8" | 1/4" | 21 | 35.5 | 3 |

Inner Structure



| No. | Item | No. | Item |
|-----|------------------|-----|---------------|
| 1 | End Cover | 10 | Pilot Body |
| 2 | Spool Spring | 11 | Piston O-ring |
| 3 | End Cover | 12 | Pilot Screw |
| 4 | End Cover Gasket | 13 | Pilot Screw |
| 5 | Body | 14 | Return Seat |
| 6 | Spool O-ring | 15 | Return Spring |
| 7 | Spool | 16 | Return Seat |
| 8 | Wear Ring | 17 | E clip |
| 9 | Piston | 18 | Side Cover |

PILOT, LOGIC & SPECIALIST VALVES

PILOT VALVE (5/2 & 5/3 WAY)

DKA300 SERIES

Specification

| | | | | |
|---------------------------|---|-------------|---|-------------|
| Model | DKA310-10 DKA320-10 | | DKA330C-10 DKA330E-10 DKA330P-10 | |
| Fluid | Air (to be filtered by 40µm filter element) | | | |
| Acting | Exterior Control | | | |
| Port | Inlet & Outlet 3/8" Exhaust 1/4" | | | |
| Orifice | 30.0mm ² (Cv=1.68) | | 18.0mm ² (Cv=1.00) | |
| Valve Type | 5/2 | | 5/3 | |
| Operating Pressure | 0.15-0.8MPa (21-114psi) | | | |
| Proof Pressure | 1.5MPa (215psi) | | | |
| Temperature | -20 to +70°C | | | |
| Material of Body | Aluminium Alloy | | | |
| Lubrication | Not required | | | |
| Max. Frequency | 4 cycle/sec | 3 cycle/sec | 4 cycle/sec | 3 cycle/sec |
| Weight | DKA310-10 275g DKA320-10 365g | | 505g | |



Symbol

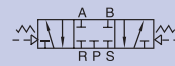
Pilot Spring



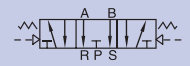
Pilot Pilot



Fully Sealed



Supply Sealed

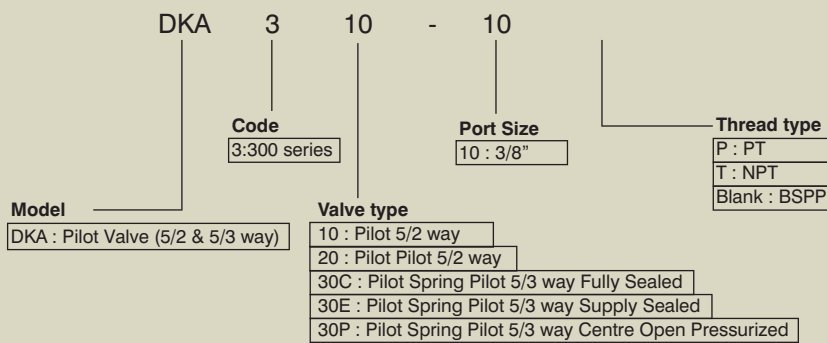


Centre Open Pressurized



1. G threads as standard, PT & NPT threads are available on request.
2. If using lubricants the practice must remain constant for the like of the valve. Lubricants like ISO VG32 or equivalent are recommended.
3. The maximum actuation frequency is in the no-load state.

Ordering Code

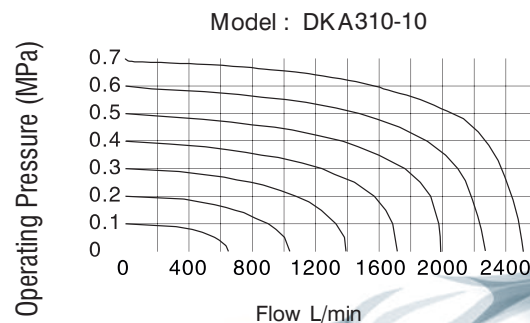
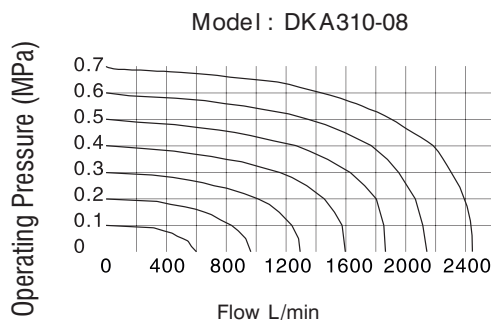


Please refer to pages 11 & 12 for manifolds to suit

Product Features

1. Close tolerance sliding spool for quick reaction
2. Three functions of 5/3 way valves Fully Sealed, Supply Sealed, & Centre Open Pressurized in mid position
3. Double pilot valves have memory function
4. Low friction, low start pressure and long service life
5. No need to add oil for lubrication
6. Multi-mounting for ease of installation

Flow Chart

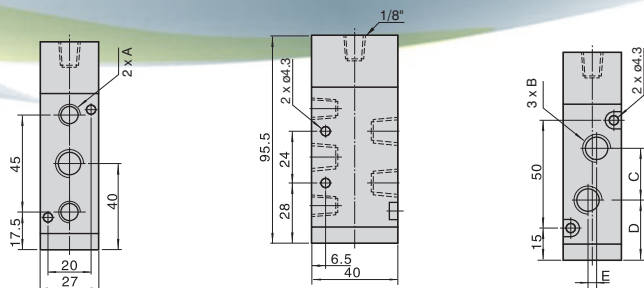


PILOT, LOGIC & SPECIALIST VALVES

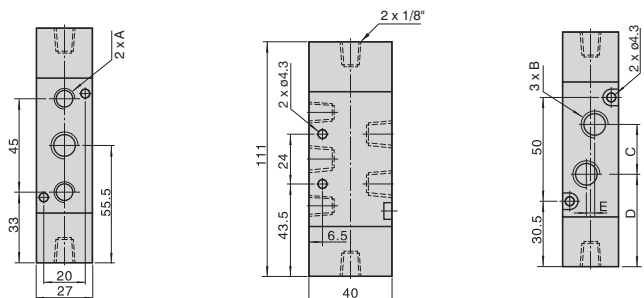
PILOT VALVE (5/2 & 5/3 WAY)

DKA300 SERIES

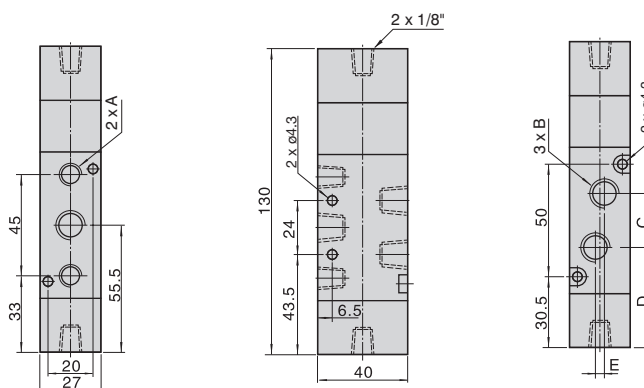
Dimensions



| Model | A | B | C | D | E |
|-----------|------|------|----|----|---|
| DKA310-10 | 1/4" | 3/8" | 24 | 28 | 4 |

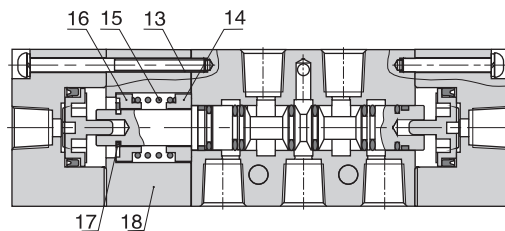
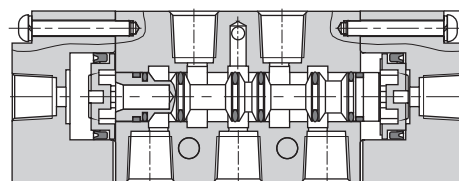
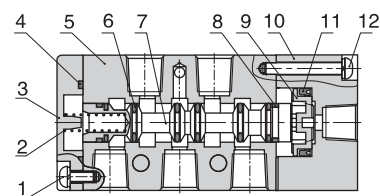


| Model | A | B | C | D | E |
|-----------|------|------|----|------|---|
| DKA320-10 | 1/4" | 3/8" | 24 | 43.5 | 4 |



| Model | A | B | C | D | E |
|-----------|------|------|----|------|---|
| DKA330-10 | 1/4" | 3/8" | 24 | 43.5 | 4 |

Inner Structure



| No. | Item | No. | Item |
|-----|------------------|-----|---------------|
| 1 | End Cover | 10 | Pilot Body |
| 2 | Spool Spring | 11 | Piston O-ring |
| 3 | End Cover | 12 | Pilot Screw |
| 4 | End Cover Gasket | 13 | Pilot Screw |
| 5 | Body | 14 | Return Seat |
| 6 | Spool O-ring | 15 | Return Spring |
| 7 | Spool | 16 | Return Seat |
| 8 | Wear Ring | 17 | E clip |
| 9 | Piston | 18 | Side Cover |

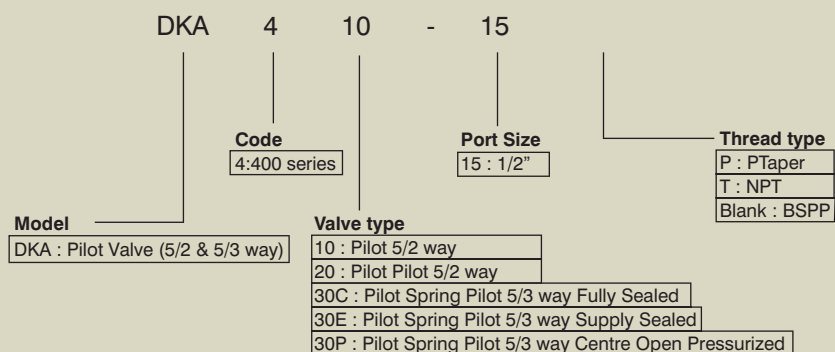
PILOT VALVE (5/2 & 5/3 WAY) DKA400 SERIES

Specification

| Model | DKA410-15 | DKA420-15 | DKA430C-15 | DKA430E-15 | DKA430P-15 |
|--------------------|---|-----------|----------------------------------|------------|------------|
| Fluid | Air (to be filtered by 40µm filter element) | | | | |
| Acting | Exterior Control | | | | |
| Port | 1/2" | | | | |
| Orifice | 50.0mm ² (Cv=2.79) | | 30.0mm ² (Cv=1.68) | | |
| Valve Type | 5/2 | | 5/3 | | |
| Operating Pressure | 0.15-0.8MPa (21-114psi) | | | | |
| Proof Pressure | 1.5MPa (215psi) | | | | |
| Temperature | -2 0 to +70°C | | | | |
| Material of Body | Aluminum Alloy | | | | |
| Lubrication | Not required | | | | |
| Max. Frequency | 3 cycle/sec | | | | |
| Weight | 550g | 685g | | | 735g |

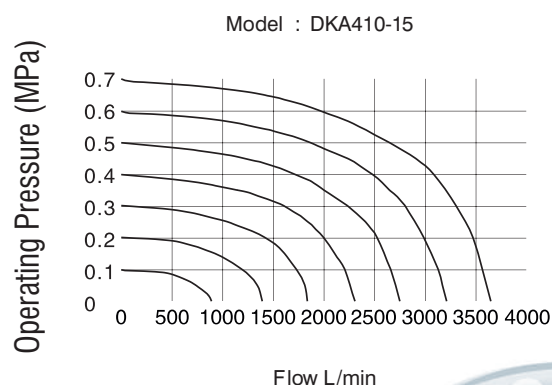
- G threads as standard, PT & NPT threads are available on request.
- If using lubricants the practice must remain constant for the like of the valve. Lubricants like ISO VG32 or equivalent are recommended.
- The maximum actuation frequency is in the no-load state.

Ordering Code



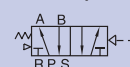
Please refer to page 10 & 11 for manifolds to suit

Flow Chart

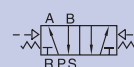


Symbol

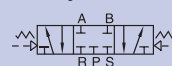
Pilot Spring



Pilot Pilot



Fully Sealed



Supply Sealed



Centre Open Pressurized



Product Features

Close tolerance sliding spool for quick reaction.

Three functions of 5/3 way valves Fully Sealed, Supply Sealed, & Centre Open Pressurized in mid position.

Low friction, low start pressure and long service life.

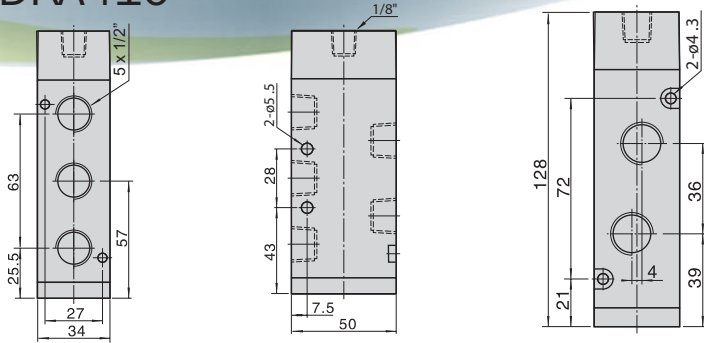
No need to add oil for lubrication.

Multi-mounting for ease of installation.

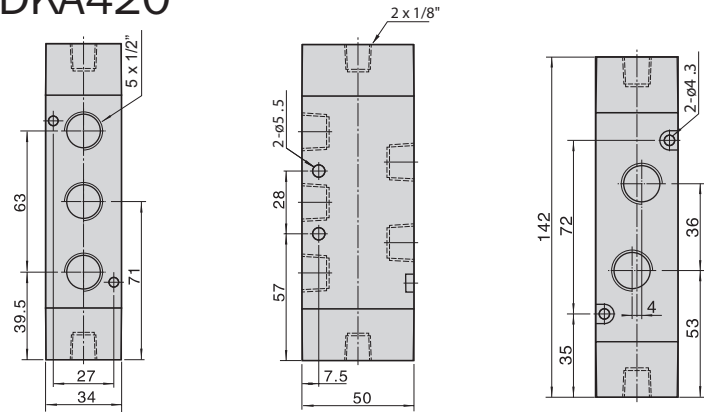
PILOT VALVE (5/2 & 5/3 WAY) DKA400 SERIES

Dimensions

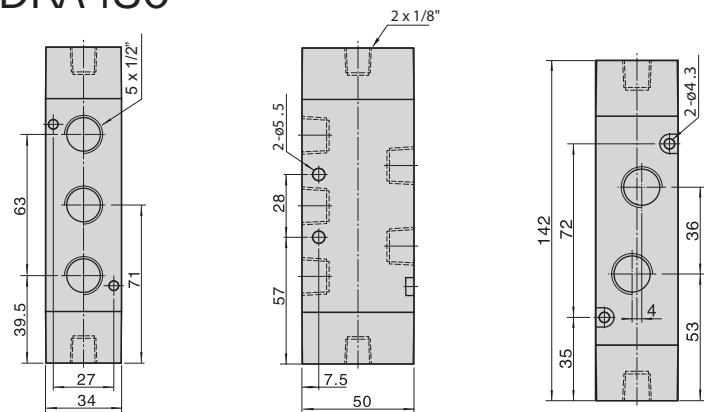
DKA410



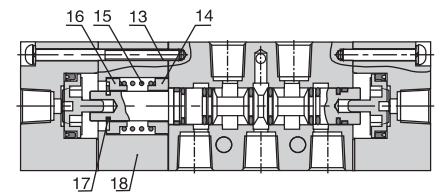
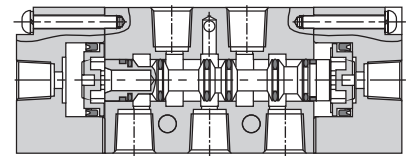
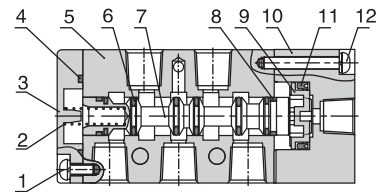
DKA420



DKA430



Inner Structure



| No. | Item | No. | Item |
|-----|------------------|-----|---------------|
| 1 | End Cover | 10 | Pilot Body |
| 2 | Spool Spring | 11 | Piston O-ring |
| 3 | End Cover | 12 | Pilot Screw |
| 4 | End Cover Gasket | 13 | Pilot Screw |
| 5 | Body | 14 | Return Seat |
| 6 | Spool O-ring | 15 | Return Spring |
| 7 | Spool | 16 | Return Seat |
| 8 | Wear Ring | 17 | E clip |
| 9 | Piston | 18 | Side Cover |