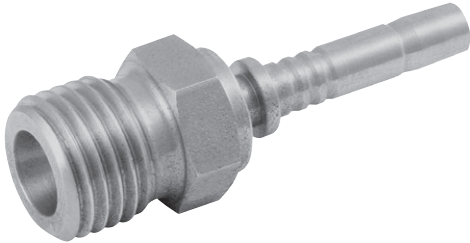
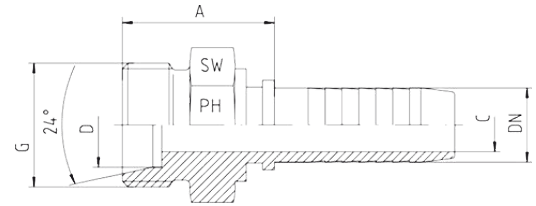


Metric Male 24° Cone Seat, S Series DIN 2353



- For compression couplings
- DIN 2353 / DIN EN ISO 8434-1 with 24° cone
- Heavy series: CES



Hose	Bore	Thread	Tube OD	Approx. Dimensions			Order Code
DN		G	D	A	C	SW	
05	3/16"	M14 x 1.5	6	23.7	3.0	14	CES-06-DN05
06	1/4"	M14 x 1.5	6	25.0	4.0	14	CES-06-DN06
05	3/16"	M16 x 1.5	8	23.7	3.0	17	CES-08-DN05
06	1/4"	M16 x 1.5	8	25.5	4.0	17	CES-08-DN06
06	1/4"	M18 x 1.5	10	25.5	4.0	19	CES-10-DN06
08	5/16"	M18 x 1.5	10	25.5	5.5	19	CES-10-DN08
10	3/8"	M18 x 1.5	10	25.5	7.0	19	CES-10-DN10
08	5/16"	M20 x 1.5	12	27.5	5.5	22	CES-12-DN08
10	3/8"	M20 x 1.5	12	25.5	7.0	22	CES-12-DN10
08	5/16"	M22 x 1.5	14	27.5	5.5	22	CES-14-DN08
10	3/8"	M22 x 1.5	14	28.0	7.0	22	CES-14-DN10
10	3/8"	M24 x 1.5	16	28.0	7.0	24	CES-16-DN10
12	1/2"	M24 x 1.5	16	28.0	9.5	24	CES-16-DN12
12	1/2"	M30 x 2	20	33.0	9.5	30	CES-20-DN12
16	5/8"	M30 x 2	20	34.0	12.5	30	CES-20-DN16
19	3/4"	M30 x 2	20	37.0	14.5	30	CES-20-DN19
19	3/4"	M36 x 2	25	40.0	14.5	36	CES-25-DN19
25	1"	M36 x 2	25	40.0	20.0	36	CES-25-DN25
25	1"	M42 x 2	30	42.5	20.0	46	CES-30-DN25
31	1.1/4"	M52 x 2	38	45.0	25.5	55	CES-38-DN31