

# TRIFLUX



**Art. 1100** 3-way L-ported with lever in aluminium. Available range: from 1/4" to 2"

**Art. 1120** 3-way T-ported with lever in aluminium. Available range: from 1/4" to 2"

## TECHNICAL FEATURES:

Temperature limits: for fluids from -15°C to +100°C  
 Pressure limits: for fluids from 40 bar to 16 bar

## Application fields:

TRIFLUX series is available both with L and T bore and allows to divert the flow in all directions including the inlet shut off, applicable to each of the three threaded ends. It is suggested for gas and water distribution, industrial and civil heating, water plants at medium pressure, hydraulics and pneumatics, non aggressive media and vacuum.

## Threaded end connections:

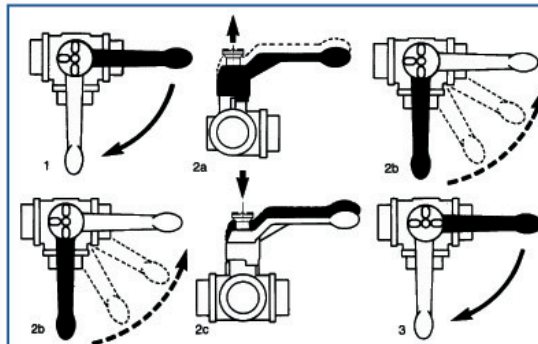
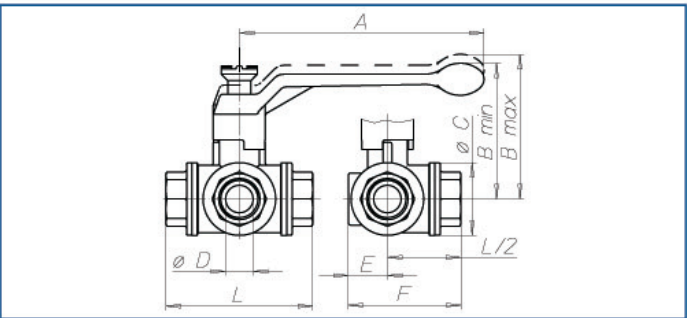
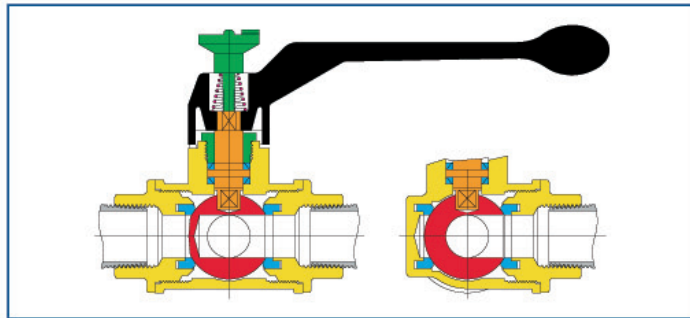
- Standard Female to ISO 7/1 Rp

## Operation devices:

Aluminium lever. Available colours: black.

## SPECIFIC FEATURES:

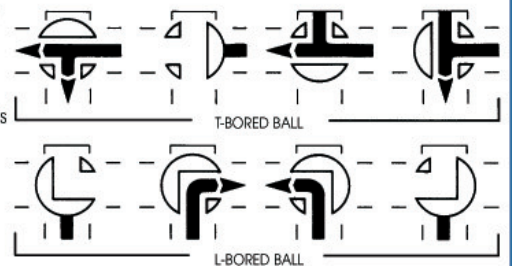
- the TRIFLUX valve offers exceptional performances in the side and upper sealing in many applications
- the lever, thanks to an original device. Patented for the lever positioning all along 360°. Allows to perform all the operations with no need to be removed
- does not need any maintenance, is equipped with wrapping seats. According to a patented system. Ensuring long life cycles
- four self-adjusting cone-shaped seals, with PTFE-PTFE sliding, therefore without wear, form two sealings with automatic functioning
- an adjusting gland allows the sealing reset on the stem
- all valves are tested according to a strict procedure covering severe inspections on the entire production.



THE DIRECTION OF THE FLOW IS UNDERSTANDABLE FROM THE MARKING ON THE POSITION INDICATOR.

POSITION 1 and 3: active operations with rotation of the ball

POSITION 2a - 2b - 2c: passive operations with recovery of lever position with no ball rotation.



## LIST OF COMPONENTS: description/materials/treatments

body and threaded end	yellow	hot stamped from bar	CW617N	UNI EN 12165
gland	violet	machined from bar	CW614N	UNI EN 12164
stem	orange	machined from bar	CW617N	UNI EN 12164
chromium pl. polished ball	red	machined from bar	CW617N	UNI EN 12164
seals	blue	virgin PTFE		
operation device	black	die-cast alumin. alloy polyur. c.		UNI 5076
position indicator	orange		CW614N	UNI EN 12164
spring + washer	violet	stainless steel		
screw	green	zinc plated steel		

## GENERAL TABLE: valve dimensions per type and size

nominal diameter	8	10	15	20	25	32	40	50
gas size in inch	1/4"	3/8"	1/2"	3/4"	1"	1 1/4"	1 1/2"	2"
Ø D bore mm	10	13	13	18	23	29	35	44
A mm	130	130	130	160	160	195	195	235
B min mm	77	77	77	89	93	110	115	129
B max mm	85	85	85	98	102	121	125	141
Ø C mm	38	38	38	48	58	67	78	95
E mm	21	21	21	26	31	34	40	47
F mm	56	56	61	74	88	99	114	132
L mm	71	71	80	96	113	130	147	169
weight with L ball gr	679	643	637	1100	1710	2660	3710	5880
weight with T ball gr	677	639	632	1090	1695	2610	3660	5820

# DELTA



Art. 1150 3-way L-ported with lever in aluminium. Available range: from 1/4" to 2"

## TECHNICAL FEATURES:

Temperature limits: for fluids from -10°C to +120°C  
Pressure limits: for fluids 10 bar max

## Application fields:

DELTA series is available with L bore and allows only the diversion of the flow without shutting off the flow with the typical operation of a standard two-way valve. It is suggested for gas and water distribution, industrial and civil heating, water plants at medium pressure, hydraulics and pneumatics, oil and petrochemical fields, non aggressive media.

## Threaded end connections:

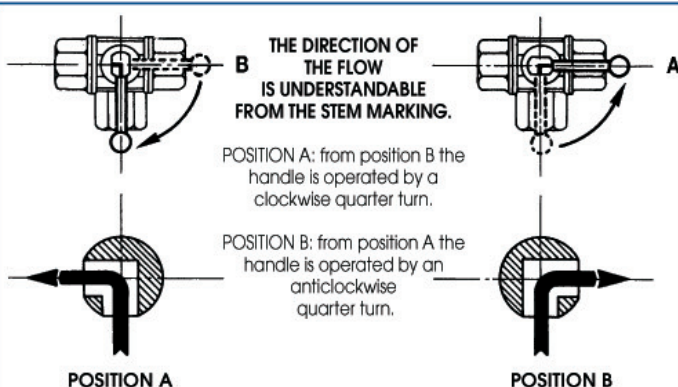
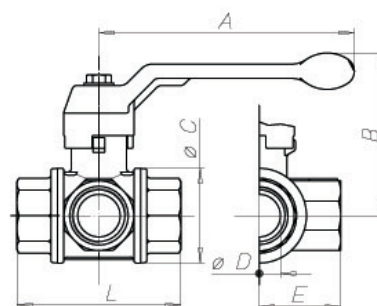
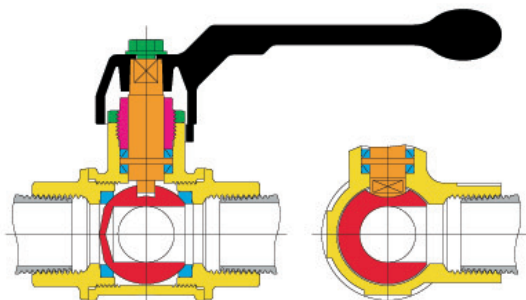
- Standard Female to ISO 7/1 Rp

## Operation devices:

Aluminium lever. Available colours: black.

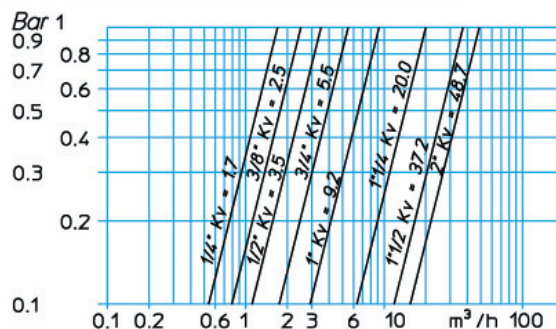
## Specific features:

- the DELTA valve with full bore is a product of easy and safe utilization guaranteeing a long working endurance
- does not need any maintenance, is equipped with wrapping seats ensuring long life cycles
- four self-adjusting cone-shaped seals, with PTFE-PTFE sliding, therefore without wear, form two sealings with automatic functioning
- an adjusting gland allows the sealing reset on the stem
- all valves are tested according to a strict procedure covering severe inspections on the entire production.



## LOSS OF HEAD DIAGRAM:

the Kv value is the port capacity causing a pressure drop of 1 bar.



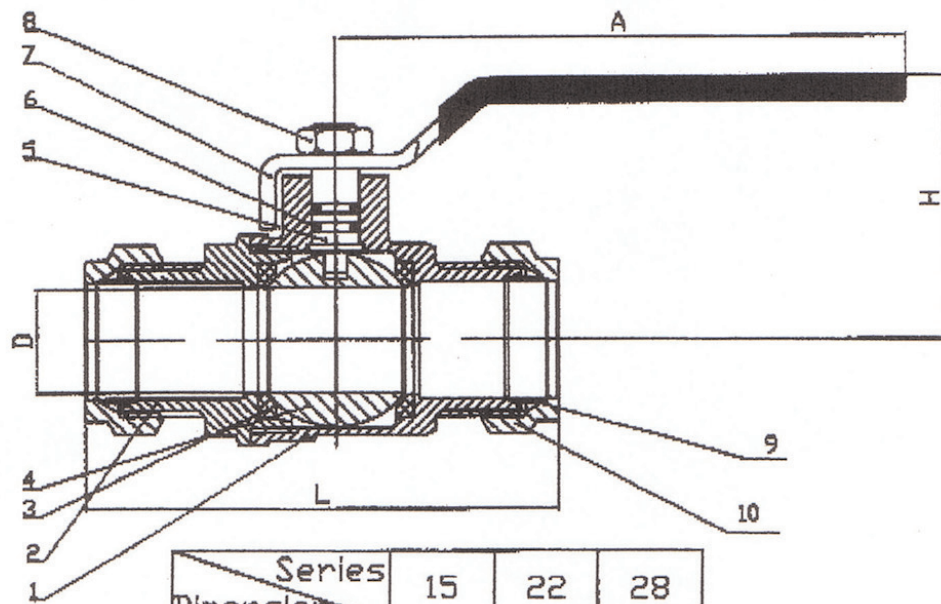
## LIST OF COMPONENTS: description/materials/treatments

component	color	material	treatment	standard
body and threaded end	yellow	hot stamped from bar	CW617N	UNI EN 12165
gland	violet	machined from bar	CW614N	UNI EN 12164
gland nut	green	machined from bar	CW614N	UNI EN 12164
stem	orange	machined from bar	CW617N	UNI EN 12164
chromium pl. polished ball	red	virgin PTFE	CW617N	UNI EN 12164
seals	blue	die-cast alumin. alloy polyur. c.		
operation device	black	stainless steel		UNI 5076
fixing screw	green	zinc plated steel		
surface treatment	-	brilliant nickel-plating		

## GENERAL TABLE: valve dimensions per type and size

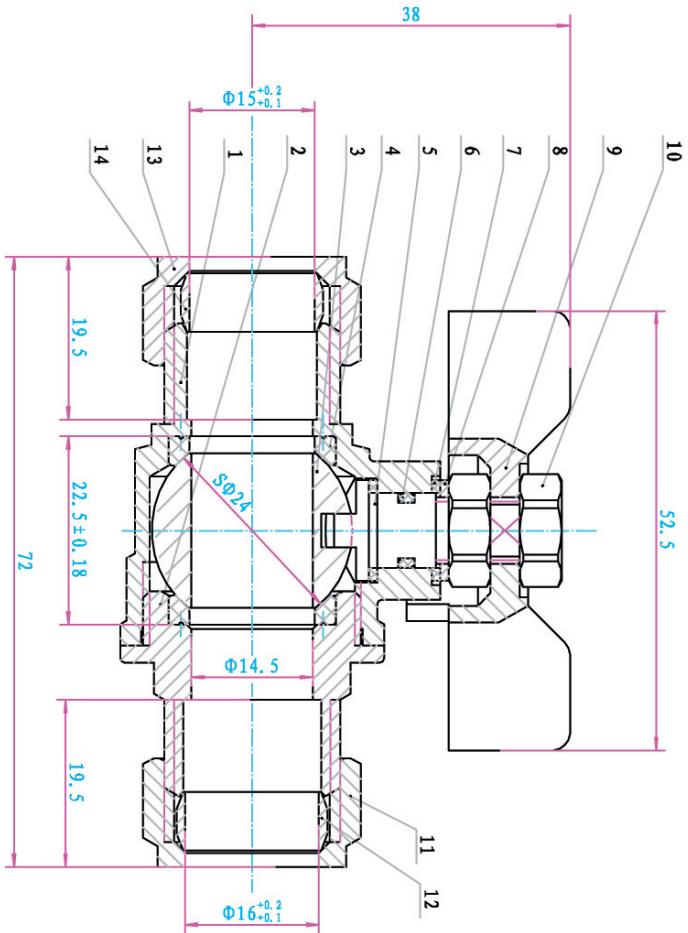
nominal diameter	8	10	15	20	25	32	40	50
gas size in inch	1/4"	3/8"	1/2"	3/4"	1"	1 1/4"	1 1/2"	2"
Ø D bore mm	10	10	14	19	24	30,5	38,5	48,5
A mm	100	100	100	120	120	150	150	175
B mm	61	61	64	76	80	98	104	119
Ø C mm	29	29	36	45	54	65	79	96
E mm	26	27	33	38	46	54	61	73
L mm	52	55	69	77	89	103	114	134
weight gr	295	270	410	680	1000	1740	2490	4020





Series Dimension	15	22	28
D	14	19	23
L	68	70	86
H	38	40	52
A	81	81	100

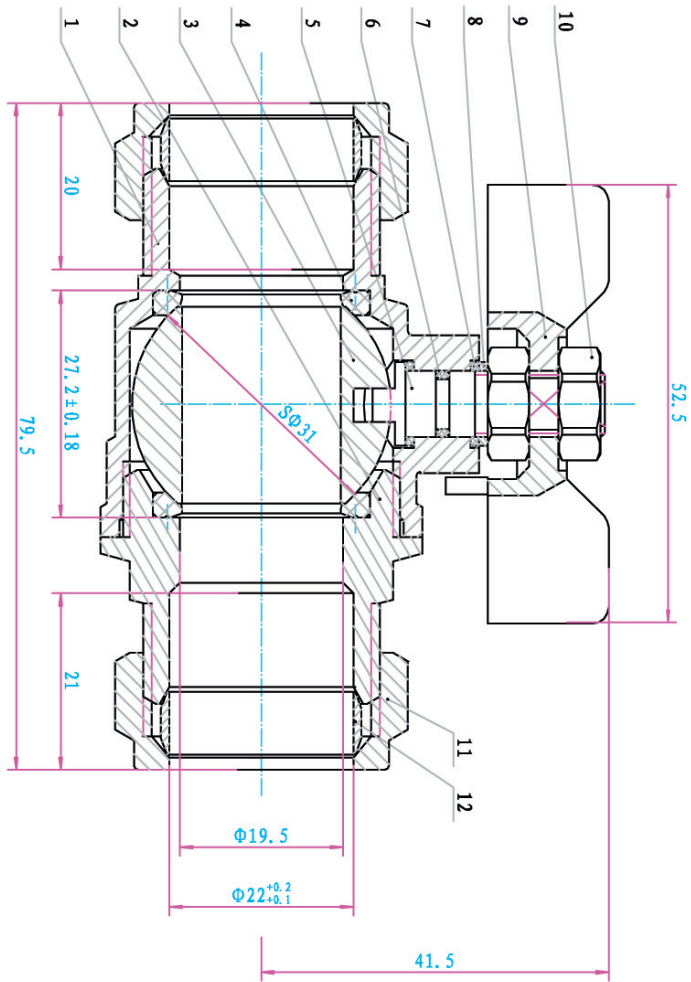
10		Compression Nut	2	CW617N
9		Olive	2	T2
8		Lock cap	1	CW614N
7		Lever	1	A3
6		O-ring	2	NBR
5		Spindle	1	CW614N
4		Ball seat	2	PTFE
3		Ball	1	CW617N
2		Bonnet	1	CW617N
1		Body	1	CW617N
No.	Drawing No.	Description	Quantity	Material



14	15MM-014	Ring	1	copper
13	15MM-013	Compression Nut	1	CW617N
12	15MM-012	Ring	1	copper
11	15MM-011	Compression Nut	1	CW617N
10	15MM-010	Lock Nut	2	304
9	15MM-009	Handle	1	A3
8	15MM-008	Washer	1	copper
7	15MM-007	Olive	2	T2
6	15MM-006	Washer	1	PTFE
5	15MM-005	Spindle	1	CW617N
4	15MM-004	Seal	2	PTFE SM031
3	15MM-003	Ball	1	CW617N
2	15MM-002	Valve Top	1	CW617N
1	15MM-001	Body	1	CW617N

Drawing Number: EPS0012

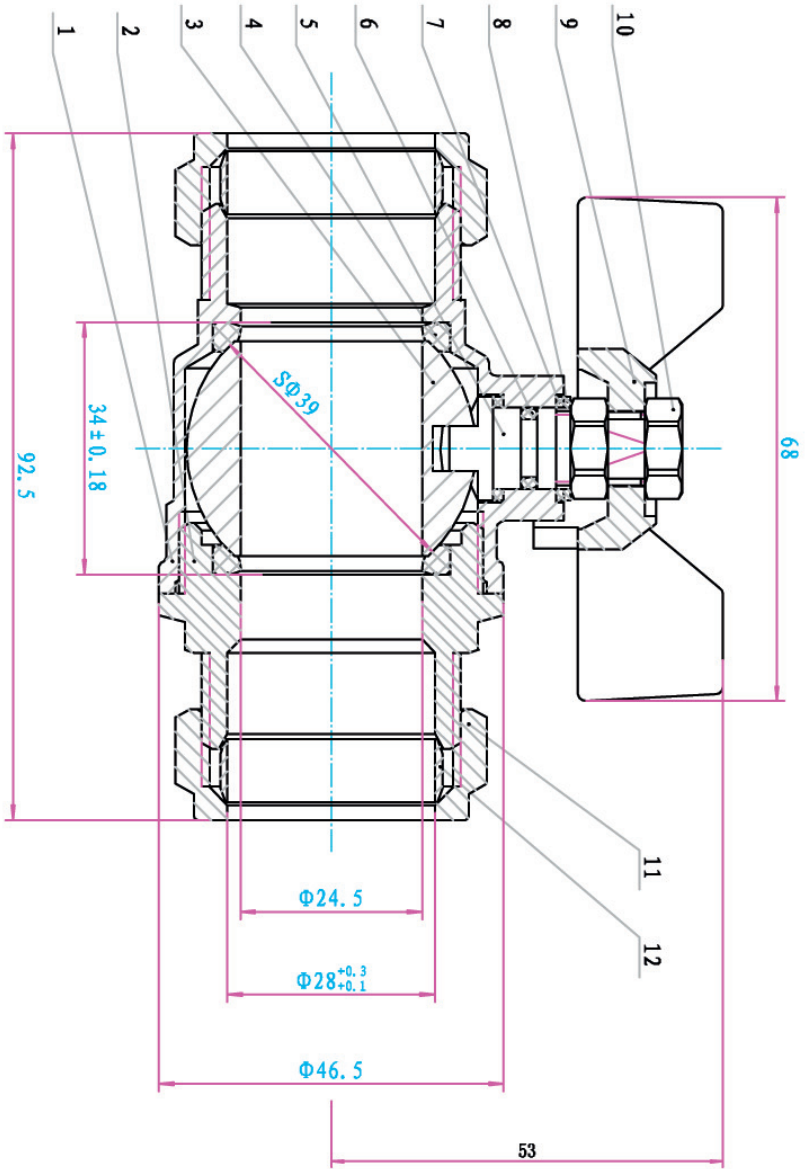
15MM PRO-COMP BALL VALVE



No.	Size	Description	Qty	Materials
12	15MM-012	Ring	2	copper
11	15MM-011	Compression Nut	2	CW617N
10	15MM-010	Lock Nut	2	304
9	15MM-009	Handle	1	A3
8	15MM-008	Washer	1	copper
7	15MM-007	Olive	2	T2
6	15MM-006	Washer	1	PTFE
5	15MM-005	Sprindle	1	CW617N
4	15MM-004	Seal	2	PTFE SMC31
3	15MM-003	Ball	1	CW617N
2	15MM-002	Valve Top	1	CW617N
1	15MM-001	Body	1	CW617N

Drawing Number: 22mm

22MM PRO-COMP BALL VALVE



12	15MM-012	Ring	2	copper
11	15MM-011	Compression Nut	2	CW617N
10	15MM-010	Lock Nut	2	304
9	15MM-009	Bracket	1	A3
8	15MM-008	Washer	1	copper
7	15MM-007	Olive	2	T2
6	15MM-006	Washer	1	PTFE
5	15MM-005	Spindle	1	CW617N
4	15MM-004	Seal	2	PTFE SMO31
3	15MM-003	Ball	1	CW617N
2	15MM-002	Valve Top	1	CW617N
1	15MM-001	Body	1	CW617N

Drawing Number: 28mm

28MM PRO-COMP BALL VALVE